

# **2025 ANNUAL ENGINEERING INSPECTION REPORT**

## **PLUM POINT ENERGY STATION CLASS 3N LANDFILL**

**PERMIT NO. 0303-S3N-R2  
AFIN: 47-00461**

**Prepared for:**

Plum Point Services Company, LLC  
2732 County Road 623  
Osceola, Arkansas 72370

**Prepared by:**

Olsson, Inc.  
3 Innwood Circle, Suite 220  
Little Rock, AR 72211

January 28, 2026

Olsson Project No. 025-06500



# PROFESSIONAL ENGINEER'S CERTIFICATION

This report on the annual engineering inspection of the Plum Point Energy Station Class 3N Landfill and supporting documentation was prepared under the direction and supervision of a qualified, State of Arkansas-registered Professional Engineer. Jason Ghidotti, PE, of Olsson, Inc. (Olsson), was responsible for the overall preparation of this report. The report has been prepared to fulfill the requirements of §257.84(b). Based on the inspection of the landfill facility and review of available landfill documents, the design, construction, operation, and maintenance of the landfill is generally consistent with recognized and generally accepted good engineering standards.



01-28-2026

---

Jason J. Ghidotti, PE, Arkansas License No. 10031

# TABLE OF CONTENTS

- 1. Introduction ..... 1
  - 1.1 Purpose of Report ..... 1
  - 1.2 Plum Point Energy Station Information ..... 1
  - 1.3 Permit History ..... 3
- 2. Landfill Layout ..... 5
  - 2.1 Existing Conditions of Landfill ..... 5
  - 2.2 Changes Made to Landfill Configuration During Reporting Period ..... 5
- 3. Waste Volume Calculations ..... 6
- 4. Assessment of Landfill Facility ..... 7
  - 4.1 General Operations ..... 7
  - 4.2 Landfill Cover System ..... 7
  - 4.3 Leachate Collection System ..... 7
  - 4.4 Stormwater Control System ..... 8
  - 4.5 Facility Roads ..... 8
  - 4.6 Fugitive Dust Control ..... 8

# APPENDICES

- Appendix A Figures
- Appendix B Copies of Weekly Landfill Inspections
- Appendix C Photos of Annual Engineering Inspection

# LIST OF TABLES

- Table 3.1. Summary of waste volume calculations ..... 6

# 1. INTRODUCTION

## 1.1 Purpose of Report

The purpose of this report is to document the annual inspection of the Plum Point Services Company, LLC (PPSC) Plum Point Energy Station (PPES; the Plant) Class 3N Landfill (the Landfill) in accordance with §257, Subpart D - Standards for the Disposal of Coal Combustion Residuals (CCR) in Landfills and Surface Impoundments (the CCR Rule). In particular, the report has been prepared to comply with §257.84(b), which requires an inspection to be conducted by a qualified professional engineer to ensure that the design, construction, operation, and maintenance of the landfill is consistent with recognized and generally accepted good engineering standards.

The report includes:

- Information on the current layout of the landfill,
- Waste volume estimates for the amount of waste contained in the landfill and remaining disposal capacity, and
- An assessment of the landfill including structural integrity and overall operations with respect to the CCR Rule and the facility permit requirements.

## 1.2 Plum Point Energy Station Information

PPES is located in Mississippi County, approximately 2 miles southeast of Osceola, Arkansas. The 245-acre solid waste management facility is located within the Plant boundaries. The location of the facility is shown on Figure 1 (all figures are located in Appendix A). The site is characterized by flat terrain and is situated within the Mississippi River floodplain. The Plant is located in an agricultural and industrial area.

PPSC is the owner of the landfill facility but uses a contractor to operate the Landfill for disposal of CCR materials generated at the Plant and general maintenance of the landfill facility.

The Plant generates electricity through the combustion of coal which produces CCR materials that are captured through the facility air emission control systems and placed in the onsite landfill. The CCRs consist of bottom ash, economizer ash, fly ash, and coal pulverizer rejects.

The bottom ash is the coarsest fraction of the coal ash and is collected in a water-filled trough beneath the steam generation furnace. Bottom ash is composed of angular, glassy particles with a porous surface texture and has the consistency of coarse sand. Coal pulverizer rejects are periodically sluiced to the collection trough beneath the boiler furnaces along with the bottom ash. The economizer ash is the heavier fraction of fly ash and is collected in hoppers

and is periodically transferred via dry flight conveyors to a submerged flight conveyor that carries the bottom ash, economizer ash, and coal pulverizer rejects to a concrete basin called the "Bottom Ash Stockout Area." The collected materials are periodically loaded into haul trucks and taken to the landfill.

The largest fraction of the CCR material generated from the coal combustion process is fly ash. The fly ash is composed of very fine particles similar to glass and has the consistency of a powder. The plant has a fly ash collection system that captures dry air heater ash and dry scrubber ash in a series of fabric filter and air heater hoppers. The collected material is conveyed to a large silo, which is periodically unloaded into haul trucks and transferred to the landfill.

The Plant air emission controls include a dry Flue Gas Desulfurization (FGD) system and an activated carbon injection system. The FGD system is designed to cool down the flue gas and remove sulfur dioxide and particulate matter from the gases emitted from the coal-fired boiler. This is accomplished by a chemical reaction using a slurry of calcium hydroxide with the flue gases, while simultaneously allowing the hot flue gases to dry the reaction products (calcium sulfite, calcium sulfate, calcium chloride, and calcium fluoride). The dry reaction products are collected with the fly ash materials in a fabric filter hopper system. The activated carbon injection system removes mercury from the gases emitted from the coal-fired boiler. The mercury combines chemically with powdered activated carbon and is removed in the same filter system as the fly ash and dry scrubber ash.

The used FGD lime slurry is collected and reused within the FGD system. The retained solids are containerized and periodically transported to the Ash Containment Area, and then to the onsite landfill.

Water is pumped from the Mississippi River and clarified to become either cooling tower makeup water or service water for plant use. The sludge generated from this process is conveyed to a filter press where the solids are containerized and periodically transported to the onsite landfill. The filtrate from this process is pumped back to the clarifiers for treatment.

Although it varies greatly, the Plant generates 120,000 to 200,000 tons of fly ash, bottom ash, and filter cake per year, of which approximately 85% is fly ash, 10% is bottom ash, and 5% is filter cake. The amount placed in the landfill also varies from year to year, but the average disposal rate for the past 5 years is approximately 147,300 cubic yards (cy) per year, in-place volume.

The permitted landfill area is located west of the plant site as shown on Figure 2. The landfill is permitted to have 12 disposal areas, varying in size from 9 to 15 acres.

## 1.3 Permit History

In July 2001, Genesis Environmental Consulting, Inc. (GEC) submitted an application on behalf of Plum Point Energy Associates, LLC, to the Arkansas Department of Energy and Environment, Division of Environmental Quality (DEQ) for a solid waste disposal facility at the PPES. In October 2002, DEQ issued a solid waste permit (0303 S3N) to construct and operate the proposed Class 3N facility.

Prior to construction of the landfill, GEC submitted a minor permit modification application in November 2005 to revise the final landfill grading plan, stormwater control plan, bottom grading plan, earthwork balance calculations, and Construction Quality Assurance (CQA) Plan. The application also included the request for an alternative bottom liner design. DEQ requested the inclusion of a leachate collection system and Terracon Consultants, Inc. (which had purchased GEC) submitted revised permit documents in July 2006. DEQ approved the minor permit modification in September 2006. Cell 1 of the landfill and the western stormwater pond were constructed in 2008. The Plant and the landfill began operation in March 2010. Since beginning operation, the plant has constructed two additional disposal areas. Cell 3 was constructed in 2014 and began receiving waste in 2015. Cell 2 was constructed in 2024.

In March 2016, FTN submitted a minor permit modification for the construction of a 2 acre leachate storage pond, removal of the leachate storage tanks, revision of the leachate management plan, and revision of the groundwater sampling and analysis plan (GWSAP). This modification was approved by DEQ on April 11, 2016, thus assigning a new permit number of 0303-S3N-R1.

In May 2021, FTN submitted a Major Permit Modification application to address potential issues identified in the existing permit including:

- Modification of landfill footprint to provide adequate buffer,
- Modification of bottom liner elevations to provide required groundwater separation,
- Alternatives for the bottom liner and final cover systems to address lack of onsite clay material,
- Revisions to stormwater conveyance and storage,
- Updated analysis and modeling of landfill components, and
- Revisions to permit and operations documents to support these and other facility improvements.

In July 2023, in accordance with an agreement between PPSC and DEQ, the Major Permit Modification application was withdrawn, and a Minor Permit Modification application submitted. The application included revisions to the bottom liner system grading plans for future disposal Cells 2 and 4 and a work plan for conducting an additional subsurface investigation to

characterize the underlying soils beneath the two disposal areas. The subsurface investigation was completed in 2023. Based on the results of the investigation, DEQ approved the Minor Permit Modification and construction of Cells 2 and 4. Cell 2 was constructed and was approved by DEQ in 2024.

In accordance with a prior agreement with DEQ (DIN 62376), PPSC will submit a Major Permit Modification application prior to the development of future disposal cells 5 through 12.

## 2. LANDFILL LAYOUT

### 2.1 Existing Conditions of Landfill

The PPES Class 3N Landfill is approximately 173 acres in size and has been designed to have 12 waste disposal cells (Figure 1, Appendix A). Cells 1 through 10 are about 15 acres in size with approximate dimensions of 1,000 ft by 660 ft. Cells 11 and 12 are narrower and smaller than the remaining cells to accommodate a potential archeological concern located east of the landfill. Cell 11 is about 9.6 acres (450 ft by 1,000 ft) and Cell 12 is about 10.8 acres (500 ft by 1,000 ft). The permitted disposal capacity (air space) is 22,400,000 cubic yards.

The landfill has been designed to meet Arkansas Pollution Control and Ecology Commission Code of Arkansas Rules 8 CAR § 60-101 standards. The bottom of the landfill is divided to slope north or south to leachate collection sumps. The elevation of the bottom varies from 245 ft National Geodetic Vertical Datum (NGVD) in the center of the landfill to approximately 230 ft NGVD at the collection sumps. The final surface of the landfill has 4:1 (horizontal to vertical) side slopes up to elevation 335 ft NGVD and then 5% top slopes to elevation 365 ft NGVD (Figure 3).

The bottom liner system for Waste Cells 1 and 3 were prepared in accordance with the 2002 permit for the facility (12-inch minimum thickness compacted clay liner with a maximum hydraulic conductivity of  $1 \times 10^{-7}$  cm/sec, a 60-mil HDPE liner, and a leachate collection system). Cell 2 was constructed in accordance with the 2023 Minor Permit Modification (geocomposite clay liner with a maximum hydraulic conductivity of  $1 \times 10^{-7}$  cm/sec, a 60-mil HDPE liner, and a leachate collection system).

No final cover system has been installed on Waste Cells 1 or 3. However, as shown on Figure 2, the side slopes of Cells 1 and 3 have received interim soil cover as they reach final waste grades.

### 2.2 Changes Made to Landfill Configuration During Reporting Period

During 2025, the facility continued to dispose of ash in Cells 1 and 3, adding interim cover to the side slopes as the fill progresses vertically. A ramp was constructed on the south side of Cell 1 into Cell 2 and the landfill operator began placing waste in the new cell, covering the entire bottom liner system.

### 3. WASTE VOLUME CALCULATIONS

The landfill facility has been surveyed annually since 2010. Each year's survey is compared to the previous year to compute the amount of CCR disposed in each open cell. The current survey is also compared to the permitted top of waste elevations to determine remaining permitted capacity, or airspace, of the constructed cells. Additionally, the current survey is compared to an estimated "operational" top of waste to determine the remaining operational capacity of the constructed cells. The operational top of waste is the maximum disposal elevation that can be achieved within the open cells while maintaining the required 4:1 exterior and 3:1 interior slopes along with a top width sufficient for disposal activities. If additional operational capacity is needed, construction of an adjacent disposal cell will be required.

Disposal rates for the facility are calculated using the average of the disposal rates from the five most recent years. Disposal rates depend upon CCR production at the plant and sales of the ash, if any. These can significantly vary year to year based upon the current economic climate, weather, and how much the plant is operational.

For the reporting year of 2025, the active disposal area of the landfill was surveyed on January 2, 2025, and again on January 6-7, 2026, a period of nearly twelve months. A comparison of surface models developed from these surveys as well as the operational top of waste is summarized in Table 3.1, below. Disposal activities resulted in a net fill of approximately 172,100 cubic yards in the active disposal area during the twelve -month period.

**Table 3.1. Summary of waste volume calculations.**

Cell Number	Status	Area (ac)	Permitted Waste Capacity (cy)	2025 Volume Placed (cy)	Total Volume Placed (cy)	Operational Remaining Disposal Capacity (cy)	Operational Remaining Life (years)
Cell 1	Active	15.5	1,607,400	34,377	1,159,900	132,900	1.0
Cell 2	Active	15.5	1,630,380	140,060	140,100	976,100	6.6
Cell 3	Active	13.6	2,191,700	3,686	1,119,600	48,150	0.3
<b>Totals</b>		<b>44.6</b>	<b>5,429,480</b>	<b>178,123</b>	<b>3,009,900</b>	<b>1,157,250</b>	<b>7.9</b>

\*Permitted volume of each cell upon completion of entire landfill.

The 5-year average annual disposal rate, including 2025, is approximately 147,300 cubic yards per year, in-place volume. At this rate, the calculated available airspace in the constructed cells, 1,157,250 cubic yards, provides approximately 7.9 years of remaining operational capacity before a new disposal cell must be opened. Total permitted life remaining is approximately 138 years based upon a remaining permitted capacity of around 20,269,400 cubic yards.

## **4. ASSESSMENT OF LANDFILL FACILITY**

This section of the report provides a summary of the inspection of the Plum Point Landfill facility that was conducted by Olsson on December 3, 2025. The assessment included review of weekly inspections of the facility, review of documents pertaining to the operation and compliance of the landfill, and an onsite inspection of the landfill facility. Copies of the Weekly Inspection Reports are included in Appendix B. Photographs of the site inspection are included in Appendix C.

### **4.1 General Operations**

During 2025, the facility constructed an access ramp on the south side of Cell 1 and began disposing of ash in Cell 2, covering the entire bottom of the cell.

The side-slopes of the landfill are generally at the required 4:1 exterior and 3:1 interior slope grades. The exterior slopes of Cells 1 and 3 have been covered with interim soil cover and are well vegetated.

The top of the disposal area is surrounded by berms for safety, to prevent stormwater runoff, and to reduce effects of wind, as described in Section 4.6, below.

No tension cracks or other features that indicate a potential slope failure were observed during the site inspection. In addition, no active seeps were noted on the exterior slopes.

The general operation of the landfill was being conducted in a safe manner and the overall maintenance of the facility is good.

### **4.2 Landfill Cover System**

As noted, no final cover system has been installed on Cells 1, 2 or 3. Figure 3 presents contours for the currently permitted final cover system.

Cells 1, 2, and 3 remain open. Interim cover soil has been placed on the completed slopes of Cells 1 and 3, as noted above.

### **4.3 Leachate Collection System**

Cells 1, 2, and 3 have automated leachate collection systems. The cells are graded to drain to sumps in each cell from which leachate is pumped via dual-contained transmission lines to the onsite leachate storage pond, completed in 2016. During the latter half of 2017, the leachate transmission pipeline to the plant was completed and utilized to transfer the leachate to the Plant's FGD lime slurry system. Leachate may also be pumped to the active landfill area and sprayed via water cannons onto the active face for dust control. The Cell 1, 2 and Cell 3

leachate pumps are operating and, according to leachate level indicators, maintaining less than 12 inches of leachate on the bottom liner systems.

## 4.4 Stormwater Control System

To prevent run-on, stormwater channels and berms have been constructed along the north, west and south sides of the landfill to manage stormwater runoff from the covered portions of the landfill side slopes. Additionally, clay perimeter berms prevent both run-on and run-off. Stormwater from the covered slopes drains to the onsite stormwater pond located west of Cell 2. Stormwater channels, culverts and discharge structures were in good operational condition. Information regarding the stormwater control system is available in the facility's CCR Stormwater Run-on and Run-off Control Plan, which was reviewed and revised in October 2021.

The facility is permitted to discharge stormwater under NPDES General Landfill Stormwater Permit No. ARG160042, as issued by the DEQ effective April 30, 2009, and renewed March 1, 2020. PPSC submitted an application for recertification of ARG160042 on January 23, 2025.

## 4.5 Facility Roads

Facility perimeter and access roads were generally well maintained and allow all-weather access.

## 4.6 Fugitive Dust Control

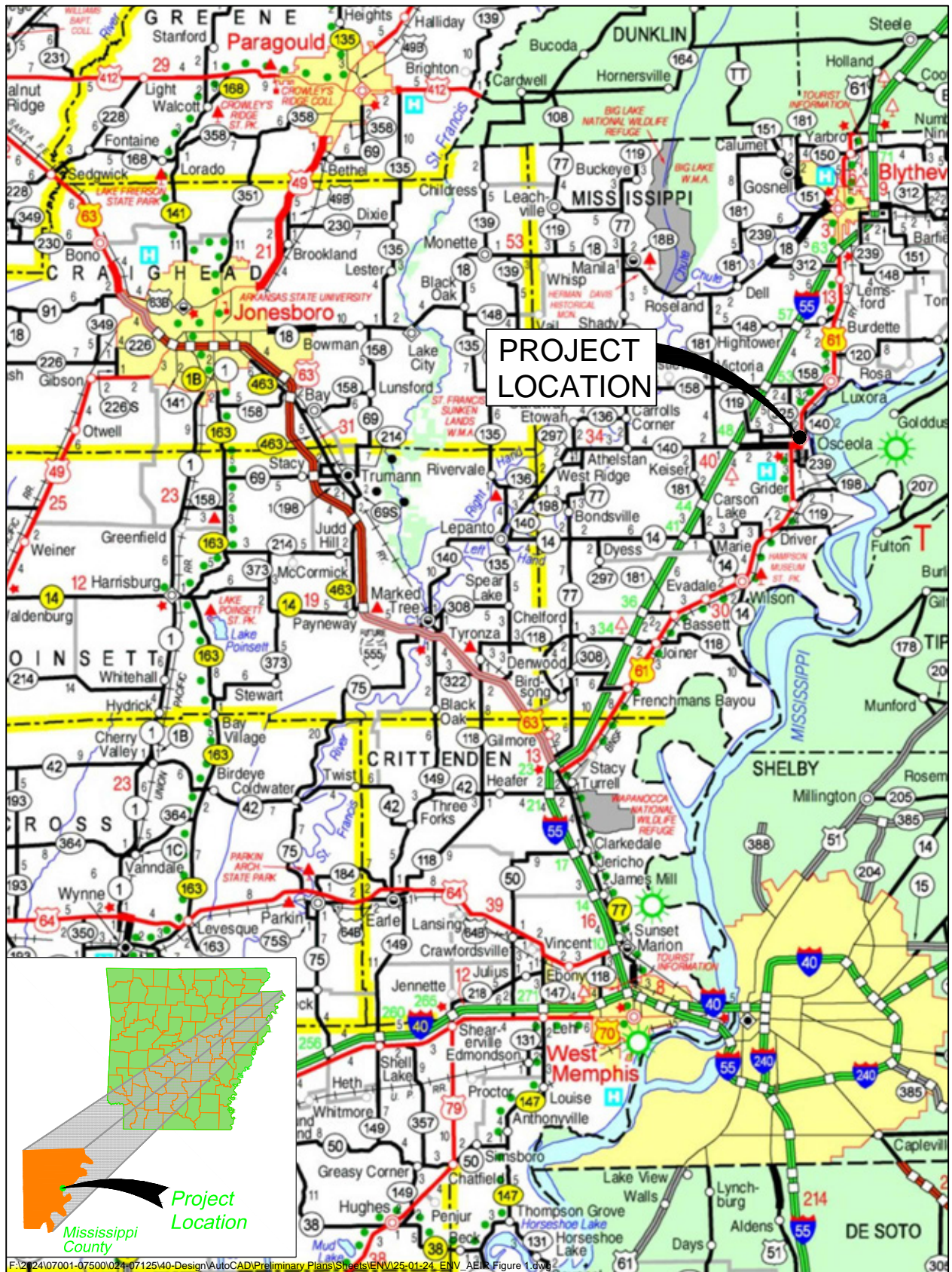
The facility is operated as outlined by the CCR Fugitive Dust Control Plan (FTN October 2015). A Fugitive Dust Control inspection has been conducted each year since, and a report has been prepared and placed in the facility records including the daily dust control logs maintained by the landfill operator.

Fly ash is transported to the landfill using end-dump trucks with tarps. The ash is mixed with water in the pug mill at an appropriate rate to minimize fugitive dust problems during truck loading and dumping, but not create excess free liquids. Water is applied, when necessary, for dust suppression on roads and the landfill using a water truck. At the time of the annual inspection, waste disposal activities were halted for lunch. Additionally, wet conditions due to recent rains prior to the inspection prevented the need for water truck operation. Previous observations of disposal activities showed little dust, which was confined to the immediate active area.

Speed limit signs were posted along the main haul road to the landfill. The roads were well maintained and did not generate visible dust during the annual inspection.

# **APPENDIX A**

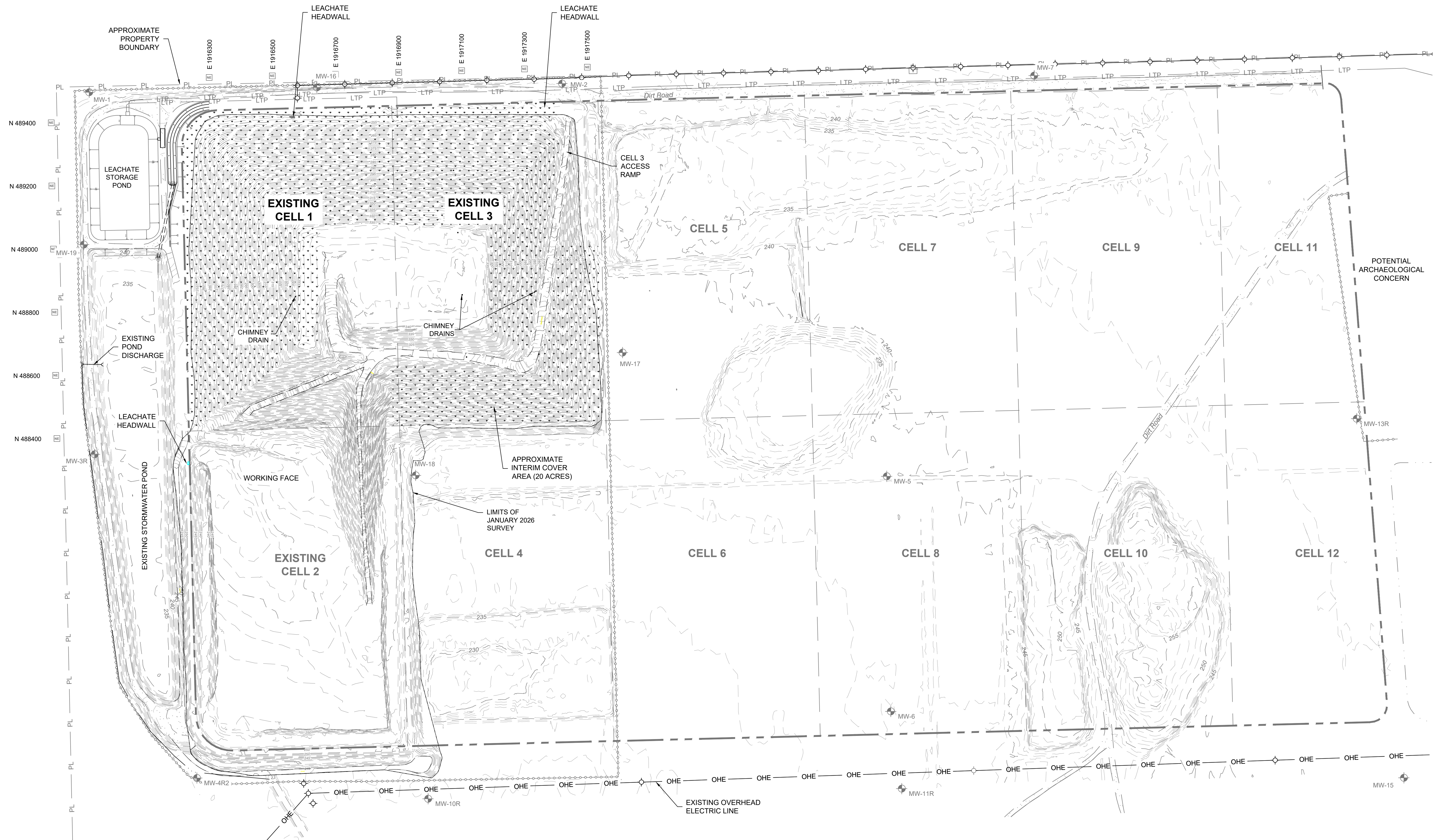
## **FIGURES**



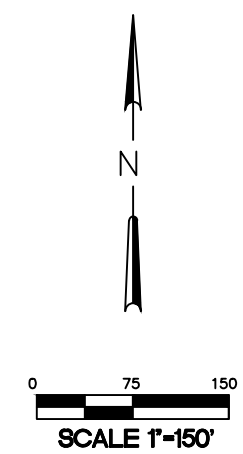
F:\2124\07001-07500\024-07125\40-Design\AutoCAD\Preliminary Plans\Sheets\ENV\25-01-24\_ENV\_AEIR\Figure 1.dwg

Figure 1. Site location map.

F:\2025\06001-06500\025-06500\140-Design\AutoCAD\Final Plans\Streets\ENVAEIR\Figures 2025\C\_PFIG2\_02506500.dwg  
 DATE: Jan 26, 2026 2:00pm USER: jghdott



- LEGEND**
- WASTE CELL BOUNDARY
  - - - EXISTING PERMITTED BOUNDARY
  - - - 230 - - - EXISTING INDEX CONTOUR (5-FT)
  - - - EXISTING INTERMEDIATE CONTOUR (1-FT)
  - == EXISTING GRAVEL ROAD
  - EXISTING FENCE
  - ⊕ EXISTING POWER POLE
  - OHE EXISTING OVERHEAD ELECTRIC LINE
  - N 488400 ⊕ LANDFILL GRID MARKER
  - ⋯ APPROXIMATE INTERIM COVER AREA
  - PL --- PL --- PROPERTY LINE

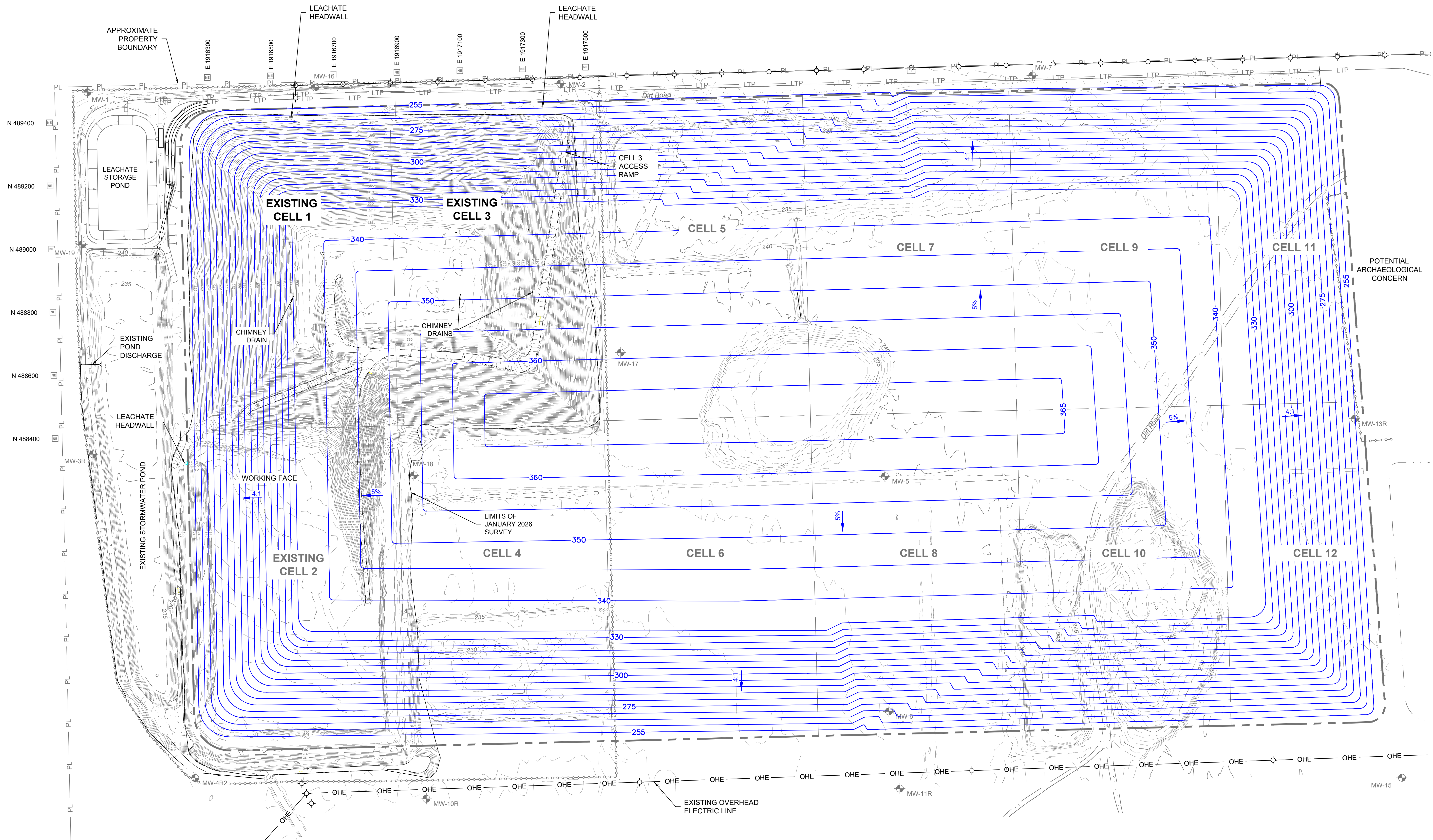


**NOTE:**  
 TOPOGRAPHIC INFORMATION IS FROM SURVEYS CONDUCTED BY HARMON SURVEYING, INC. IN AUGUST 2017 (SITE) AND JANUARY 2026 (CELLS 1, 2, AND 3).

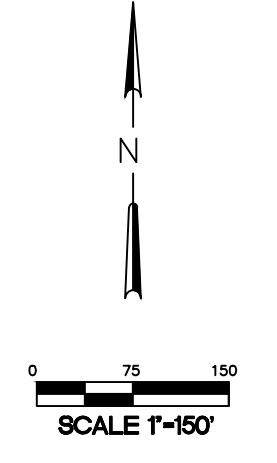
REV. NO.	DATE	DESCRIPTION

drawn by: JCT  
 designed by: JIG  
 project no.: 025-06500  
 date: 01/28/2026

F:\2025\06001-06500\025-06500\40-Design\AutoCAD\Final Plans\Streets\ENVA\AIR Figures 2025\C\_PFI03\_02506500.dwg  
 DATE: Jan 26, 2026 2:18pm USER: jghidoti



- LEGEND**
- WASTE CELL BOUNDARY
  - - - EXISTING PERMITTED BOUNDARY
  - - - 230 - - - EXISTING INDEX CONTOUR (5-FT)
  - - - EXISTING INTERMEDIATE CONTOUR (1-FT)
  - == EXISTING GRAVEL ROAD
  - ○ ○ ○ ○ EXISTING FENCE
  - EXISTING POWER POLE
  - OHE — EXISTING OVERHEAD ELECTRIC LINE
  - LANDFILL GRID MARKER
  - PL — PL — PROPERTY LINE
  - 350 — PERMITTED FINAL COVER CONTOUR



**NOTE:**  
 TOPOGRAPHIC INFORMATION IS FROM SURVEYS CONDUCTED BY HARMON SURVEYING, INC. IN AUGUST 2017 (SITE) AND JANUARY 2026 (CELLS 1, 2, AND 3).

REV. NO.	DATE	DESCRIPTION

**FIGURE 3**  
 PERMITTED FINAL COVER CONTOURS  
 PLUM POINT ENERGY SERVICES CLASS 3 N LANDFILL  
 2025 ANNUAL ENGINEERING INSPECTION REPORT  
 OSCEOLA, AR

drawn by: JCT  
 designed by: JJS  
 project no.: 025-06500  
 date: 01/28/2026

**APPENDIX B**  
**COPIES OF WEEKLY LANDFILL INSPECTIONS**

**PLUM POINT SERVICES COMPANY CLASS 3N LANDFILL  
WEEKLY LANDFILL INSPECTION FORM**

Facility Name: Plum Point Energy Station, Class 3N Landfill			
Facility Address: 2732 South County Road 623, Osceola, AR 72370			
Date: 1-7-2025	Time: 9:30 AM	Weather: cloudy/ spitting snow	
Inspection Representatives			
Charah: Bryan Mangrum			
Others:			
Weekly Inspection Observations			
	Acceptable	Needs Improvement	Comments (See page 2 for Additional Comments)
1. General Operating Issues			
1a. General Stability of landfill slopes	x		
1b. Condition of exposed waste slopes	x		
1c. Condition of exposed waste grading	x		
1d. Signs of erosion or washouts	x		
1e. Signs of leachate seeps	x		
1g. Condition of landfill signage	x		
2. Cover System			
2a. Condition of interim cover	x		
2b. Condition of final cover	N/A		
2c. Condition of vegetation	x		
2d. Condition of erosion control devices	x		
3. Leachate Collection and Storage System			
3a. Condition of leachate pumps	x		
3b. Condition of leachate control panels	x		
3c. Status of leachate levels in disposal cells	x		
3d. Condition of leachate collection piping	x		
3e. Condition of cleanouts and headwalls	x		
3f. Condition of leachate transmission piping	x		
3g. Condition of leachate storage system	x		
3h. Leachate Totalizer Flow Reading in gallons	x		14336091.2
4. Stormwater Control Facilities			
4a. Condition of culverts	x		
4b. Condition of ditches	x		
4c. Condition of Diversion Berms	x		
4d. Condition of letdowns	N/A		
4e. Condition of stormwater ponds	x		
5. Groundwater Monitoring Wells			
5a. Condition of well casing and locks	x		
5b. Condition of well pads and pipe bollards	x		
5c. Access to wells	x		
6. Landfill Access Road			
6a. Condition of main access road	x		
6b. Condition of active disposal area access road	x		
6c. Acceptable dust control measures	x		
7. Other items			
7a.			
7b.			
<b>Bryan Mangrum</b>	<b>Bryan Mangrum</b>		<b>1-7-2025</b>
<b>Print Name of Inspector Completing Form</b>	<b>Signature</b>		<b>Date</b>

**PLUM POINT SERVICES COMPANY CLASS 3N LANDFILL  
WEEKLY LANDFILL INSPECTION FORM**

Facility Name: Plum Point Energy Station, Class 3N Landfill			
Facility Address: 2732 South County Road 623, Osceola, AR 72370			
Date: 1-14-2025	Time: 10:00 AM	Weather: clear	
Inspection Representatives			
Charah: Bryan Mangrum			
Others:			
Weekly Inspection Observations			
	Acceptable	Needs Improvement	Comments (See page 2 for Additional Comments)
1. General Operating Issues			
1a. General Stability of landfill slopes	x		
1b. Condition of exposed waste slopes	x		
1c. Condition of exposed waste grading	x		
1d. Signs of erosion or washouts	x		
1e. Signs of leachate seeps	x		
1g. Condition of landfill signage	x		
2. Cover System			
2a. Condition of interim cover	x		
2b. Condition of final cover	N/A		
2c. Condition of vegetation	x		
2d. Condition of erosion control devices	x		
3. Leachate Collection and Storage System			
3a. Condition of leachate pumps	x		
3b. Condition of leachate control panels	x		
3c. Status of leachate levels in disposal cells	x		
3d. Condition of leachate collection piping	x		
3e. Condition of cleanouts and headwalls	x		
3f. Condition of leachate transmission piping	x		
3g. Condition of leachate storage system	x		
3h. Leachate Totalizer Flow Reading in gallons	x		14660512.2
4. Stormwater Control Facilities			
4a. Condition of culverts	x		
4b. Condition of ditches	x		
4c. Condition of Diversion Berms	x		
4d. Condition of letdowns	N/A		
4e. Condition of stormwater ponds	x		
5. Groundwater Monitoring Wells			
5a. Condition of well casing and locks	x		
5b. Condition of well pads and pipe bollards	x		
5c. Access to wells	x		
6. Landfill Access Road			
6a. Condition of main access road	x		
6b. Condition of active disposal area access road	x		
6c. Acceptable dust control measures	x		
7. Other items			
7a.			
7b.			
<b>Bryan Mangrum</b>	<b>Bryan Mangrum</b>		<b>1-14-2025</b>
<b>Print Name of Inspector Completing Form</b>	<b>Signature</b>		<b>Date</b>

**PLUM POINT SERVICES COMPANY CLASS 3N LANDFILL  
WEEKLY LANDFILL INSPECTION FORM**

Facility Name: Plum Point Energy Station, Class 3N Landfill			
Facility Address: 2732 South County Road 623, Osceola, AR 72370			
Date: 1-21-25	Time: 1:00 PM	Weather: clear / below freezing temps	
Inspection Representatives			
Charah: Bryan Mangrum			
Others:			
Weekly Inspection Observations			
	Acceptable	Needs Improvement	Comments (See page 2 for Additional Comments)
1. General Operating Issues			
1a. General Stability of landfill slopes	x		
1b. Condition of exposed waste slopes	x		
1c. Condition of exposed waste grading	x		
1d. Signs of erosion or washouts	x		
1e. Signs of leachate seeps	x		
1g. Condition of landfill signage	x		
2. Cover System			
2a. Condition of interim cover	x		
2b. Condition of final cover	N/A		
2c. Condition of vegetation	x		
2d. Condition of erosion control devices	x		
3. Leachate Collection and Storage System			
3a. Condition of leachate pumps	x		
3b. Condition of leachate control panels	x		
3c. Status of leachate levels in disposal cells	x		
3d. Condition of leachate collection piping	x		
3e. Condition of cleanouts and headwalls	x		
3f. Condition of leachate transmission piping	x		
3g. Condition of leachate storage system	x		
3h. Leachate Totalizer Flow Reading in gallons	x		14660512.2
4. Stormwater Control Facilities			
4a. Condition of culverts	x		
4b. Condition of ditches	x		
4c. Condition of Diversion Berms	x		
4d. Condition of letdowns	N/A		
4e. Condition of stormwater ponds	x		
5. Groundwater Monitoring Wells			
5a. Condition of well casing and locks	x		
5b. Condition of well pads and pipe bollards	x		
5c. Access to wells	x		
6. Landfill Access Road			
6a. Condition of main access road	x		
6b. Condition of active disposal area access road	x		
6c. Acceptable dust control measures	x		
7. Other items			
7a.			
7b.			
<b>Bryan Mangrum</b>	<b>Bryan Mangrum</b>		<b>1-21-2025</b>
<b>Print Name of Inspector Completing Form</b>	<b>Signature</b>		<b>Date</b>

**PLUM POINT SERVICES COMPANY CLASS 3N LANDFILL  
WEEKLY LANDFILL INSPECTION FORM**

Facility Name: Plum Point Energy Station, Class 3N Landfill			
Facility Address: 2732 South County Road 623, Osceola, AR 72370			
Date: 1-28-25	Time: 9:00 AM	Weather: clear	
Inspection Representatives			
Charah: Bryan Mangrum			
Others:			
Weekly Inspection Observations			
	Acceptable	Needs Improvement	Comments (See page 2 for Additional Comments)
1. General Operating Issues			
1a. General Stability of landfill slopes	x		
1b. Condition of exposed waste slopes	x		
1c. Condition of exposed waste grading	x		
1d. Signs of erosion or washouts	x		
1e. Signs of leachate seeps	x		
1g. Condition of landfill signage	x		
2. Cover System			
2a. Condition of interim cover	x		
2b. Condition of final cover	N/A		
2c. Condition of vegetation	x		
2d. Condition of erosion control devices	x		
3. Leachate Collection and Storage System			
3a. Condition of leachate pumps	x		
3b. Condition of leachate control panels	x		
3c. Status of leachate levels in disposal cells	x		
3d. Condition of leachate collection piping	x		
3e. Condition of cleanouts and headwalls	x		
3f. Condition of leachate transmission piping	x		
3g. Condition of leachate storage system	x		
3h. Leachate Totalizer Flow Reading in gallons	x		14660512.2
4. Stormwater Control Facilities			
4a. Condition of culverts	x		
4b. Condition of ditches	x		
4c. Condition of Diversion Berms	x		
4d. Condition of letdowns	N/A		
4e. Condition of stormwater ponds	x		
5. Groundwater Monitoring Wells			
5a. Condition of well casing and locks	x		
5b. Condition of well pads and pipe bollards	x		
5c. Access to wells	x		
6. Landfill Access Road			
6a. Condition of main access road	x		
6b. Condition of active disposal area access road	x		
6c. Acceptable dust control measures	x		
7. Other items			
7a.			
7b.			
<b>Bryan Mangrum</b>	<b>Bryan Mangrum</b>		<b>1-28-2025</b>
<b>Print Name of Inspector Completing Form</b>	<b>Signature</b>		<b>Date</b>

# PLUM POINT ENERGY STATION CLASS 3N LANDFILL

## Operations Inspection Form

Inspection Completed By: Bryan Mangrum Date: 1/29/2025

DESCRIPTION	INSPECTION INTERVAL	PASS	FAIL*
<b>Surface Water System</b>			
Drainage Ditches & Culverts	Monthly	<input checked="" type="checkbox"/>	<input type="checkbox"/>
Berms	Monthly	<input checked="" type="checkbox"/>	<input type="checkbox"/>
<b>Leachate Collection System</b>			
Pumps	Monthly	<input checked="" type="checkbox"/>	<input type="checkbox"/>
Totalizers	Monthly	<input checked="" type="checkbox"/>	<input type="checkbox"/>
Transmission/Recirculation Systems	Monthly	<input checked="" type="checkbox"/>	<input type="checkbox"/>
Storage Pond	Monthly	<input checked="" type="checkbox"/>	<input type="checkbox"/>
<b>Landfill Final Cover System</b>			
Erosion	Monthly	<input checked="" type="checkbox"/>	<input type="checkbox"/>
Ponded Water	Monthly	<input checked="" type="checkbox"/>	<input type="checkbox"/>
Settlement	Monthly	<input checked="" type="checkbox"/>	<input type="checkbox"/>
Vegetation	Monthly	<input checked="" type="checkbox"/>	<input type="checkbox"/>
<b>Facility Roads</b>			
Safety	Monthly	<input checked="" type="checkbox"/>	<input type="checkbox"/>
Routing	Monthly	<input checked="" type="checkbox"/>	<input type="checkbox"/>
Condition	Monthly	<input checked="" type="checkbox"/>	<input type="checkbox"/>
Mud	Monthly	<input checked="" type="checkbox"/>	<input type="checkbox"/>
Passable Width	Monthly	<input checked="" type="checkbox"/>	<input type="checkbox"/>
<b>Emergency Response Equipment</b>			
Fire Extinguisher	Check Quarterly	<input checked="" type="checkbox"/>	<input type="checkbox"/>
	Test Annually	<input checked="" type="checkbox"/>	<input type="checkbox"/>
Communication System	Monthly	<input checked="" type="checkbox"/>	<input type="checkbox"/>
List of Emergency Phone Numbers	Monthly	<input checked="" type="checkbox"/>	<input type="checkbox"/>
First Aid Kits	Monthly	<input checked="" type="checkbox"/>	<input type="checkbox"/>
<b>Waste Cell and Plant Grid Markers</b>	Monthly	<input checked="" type="checkbox"/>	<input type="checkbox"/>
<b>Survey Markers</b>	Annually	<input checked="" type="checkbox"/>	<input type="checkbox"/>
<b>Groundwater Monitoring Wells</b>	Semi-Annually	<input checked="" type="checkbox"/>	<input type="checkbox"/>

\*Explain failure on back of form

**PLUM POINT SERVICES COMPANY CLASS 3N LANDFILL  
WEEKLY LANDFILL INSPECTION FORM**

Facility Name: Plum Point Energy Station, Class 3N Landfill			
Facility Address: 2732 South County Road 623, Osceola, AR 72370			
Date: 2-4-2025	Time: 2: 30 PM	Weather: overcast	
Inspection Representatives			
Charah: Bryan Mangrum			
Others:			
Weekly Inspection Observations			
	Acceptable	Needs Improvement	Comments (See page 2 for Additional Comments)
1. General Operating Issues			
1a. General Stability of landfill slopes	x		
1b. Condition of exposed waste slopes	x		
1c. Condition of exposed waste grading	x		
1d. Signs of erosion or washouts	x		
1e. Signs of leachate seeps	x		
1g. Condition of landfill signage	x		
2. Cover System			
2a. Condition of interim cover	x		
2b. Condition of final cover	N/A		
2c. Condition of vegetation	x		
2d. Condition of erosion control devices	x		
3. Leachate Collection and Storage System			
3a. Condition of leachate pumps	x		
3b. Condition of leachate control panels	x		
3c. Status of leachate levels in disposal cells	x		Levels normal
3d. Condition of leachate collection piping	x		
3e. Condition of cleanouts and headwalls	x		
3f. Condition of leachate transmission piping	x		
3g. Condition of leachate storage system	x		
3h. Leachate Totalizer Flow Reading in gallons	x		15137640.4
4. Stormwater Control Facilities			
4a. Condition of culverts	x		
4b. Condition of ditches	x		
4c. Condition of Diversion Berms	x		
4d. Condition of letdowns	N/A		
4e. Condition of stormwater ponds	x		
5. Groundwater Monitoring Wells			
5a. Condition of well casing and locks	x		
5b. Condition of well pads and pipe bollards	x		
5c. Access to wells	x		
6. Landfill Access Road			
6a. Condition of main access road	x		
6b. Condition of active disposal area access road	x		
6c. Acceptable dust control measures	x		
7. Other items			
7a.			
7b.			
<b>Bryan Mangrum</b>	<b>Bryan Mangrum</b>		<b>2-4-2025</b>
<b>Print Name of Inspector Completing Form</b>	<b>Signature</b>		<b>Date</b>

**PLUM POINT SERVICES COMPANY CLASS 3N LANDFILL  
WEEKLY LANDFILL INSPECTION FORM**

Facility Name: Plum Point Energy Station, Class 3N Landfill			
Facility Address: 2732 South County Road 623, Osceola, AR 72370			
Date: 2-11-2025	Time: 12: 30 PM	Weather: Rain	
Inspection Representatives			
Charah: Bryan Mangrum			
Others:			
Weekly Inspection Observations			
	Acceptable	Needs Improvement	Comments (See page 2 for Additional Comments)
1. General Operating Issues			
1a. General Stability of landfill slopes	x		
1b. Condition of exposed waste slopes	x		
1c. Condition of exposed waste grading	x		
1d. Signs of erosion or washouts	x		Repaired haul Rd up to cell 3
1e. Signs of leachate seeps	x		
1g. Condition of landfill signage	x		
2. Cover System			
2a. Condition of interim cover	x		
2b. Condition of final cover	N/A		
2c. Condition of vegetation	x		
2d. Condition of erosion control devices	x		
3. Leachate Collection and Storage System			
3a. Condition of leachate pumps	x		
3b. Condition of leachate control panels	x		
3c. Status of leachate levels in disposal cells	x		Levels normal cell 1 and 3
3d. Condition of leachate collection piping	x		
3e. Condition of cleanouts and headwalls	x		
3f. Condition of leachate transmission piping	x		
3g. Condition of leachate storage system	x		
3h. Leachate Totalizer Flow Reading in gallons	x		15918852.7
4. Stormwater Control Facilities			
4a. Condition of culverts	x		
4b. Condition of ditches	x		
4c. Condition of Diversion Berms	x		
4d. Condition of letdowns	N/A		
4e. Condition of stormwater ponds	x		
5. Groundwater Monitoring Wells			
5a. Condition of well casing and locks	x		
5b. Condition of well pads and pipe bollards	x		
5c. Access to wells	x		
6. Landfill Access Road			
6a. Condition of main access road	x		
6b. Condition of active disposal area access road	x		Repaired RD up to cell 3
6c. Acceptable dust control measures	x		
7. Other items			
7a.			
7b.			
<b>Bryan Mangrum</b>	<b>Bryan Mangrum</b>		<b>2-11-2025</b>
<b>Print Name of Inspector Completing Form</b>	<b>Signature</b>		<b>Date</b>

**PLUM POINT SERVICES COMPANY CLASS 3N LANDFILL  
WEEKLY LANDFILL INSPECTION FORM**

Facility Name: Plum Point Energy Station, Class 3N Landfill			
Facility Address: 2732 South County Road 623, Osceola, AR 72370			
Date: 2-18-2025	Time: 8: 00 AM	Weather: overcast/cold windy	
Inspection Representatives			
Charah: Bryan Mangrum			
Others:			
Weekly Inspection Observations			
	Acceptable	Needs Improvement	Comments (See page 2 for Additional Comments)
1. General Operating Issues			
1a. General Stability of landfill slopes	x		
1b. Condition of exposed waste slopes	x		
1c. Condition of exposed waste grading	x		
1d. Signs of erosion or washouts	x		
1e. Signs of leachate seeps	x		
1g. Condition of landfill signage	x		
2. Cover System			
2a. Condition of interim cover	x		
2b. Condition of final cover	N/A		
2c. Condition of vegetation	x		
2d. Condition of erosion control devices	x		
3. Leachate Collection and Storage System			
3a. Condition of leachate pumps	x		
3b. Condition of leachate control panels	x		
3c. Status of leachate levels in disposal cells	x		Levels normal cell 1&3
3d. Condition of leachate collection piping	x		
3e. Condition of cleanouts and headwalls	x		
3f. Condition of leachate transmission piping	x		
3g. Condition of leachate storage system	x		
3h. Leachate Totalizer Flow Reading in gallons	x		16628333.5
4. Stormwater Control Facilities			
4a. Condition of culverts	x		
4b. Condition of ditches	x		
4c. Condition of Diversion Berms	x		
4d. Condition of letdowns	N/A		
4e. Condition of stormwater ponds	x		
5. Groundwater Monitoring Wells			
5a. Condition of well casing and locks	x		
5b. Condition of well pads and pipe bollards	x		
5c. Access to wells	x		
6. Landfill Access Road			
6a. Condition of main access road	x		
6b. Condition of active disposal area access road	x		
6c. Acceptable dust control measures	x		
7. Other items			
7a.			
7b.			
<b>Bryan Mangrum</b>	<b>Bryan Mangrum</b>		<b>2-18-2025</b>
<b>Print Name of Inspector Completing Form</b>	<b>Signature</b>		<b>Date</b>

**PLUM POINT SERVICES COMPANY CLASS 3N LANDFILL  
WEEKLY LANDFILL INSPECTION FORM**

Facility Name: Plum Point Energy Station, Class 3N Landfill			
Facility Address: 2732 South County Road 623, Osceola, AR 72370			
Date: 2-25-2025	Time: 10: 00 AM	Weather: clear	
Inspection Representatives			
Charah: Bryan Mangrum			
Others:			
Weekly Inspection Observations			
	Acceptable	Needs Improvement	Comments (See page 2 for Additional Comments)
1. General Operating Issues			
1a. General Stability of landfill slopes	x		
1b. Condition of exposed waste slopes	x		
1c. Condition of exposed waste grading	x		
1d. Signs of erosion or washouts	x		
1e. Signs of leachate seeps	x		
1g. Condition of landfill signage	x		
2. Cover System			
2a. Condition of interim cover	x		
2b. Condition of final cover	N/A		
2c. Condition of vegetation	x		
2d. Condition of erosion control devices	x		
3. Leachate Collection and Storage System			
3a. Condition of leachate pumps	x		
3b. Condition of leachate control panels	x		
3c. Status of leachate levels in disposal cells	x		Levels normal cell 1&3
3d. Condition of leachate collection piping	x		
3e. Condition of cleanouts and headwalls	x		
3f. Condition of leachate transmission piping	x		
3g. Condition of leachate storage system	x		
3h. Leachate Totalizer Flow Reading in gallons	x		
4. Stormwater Control Facilities			
4a. Condition of culverts	x		
4b. Condition of ditches	x		
4c. Condition of Diversion Berms	x		
4d. Condition of letdowns	N/A		
4e. Condition of stormwater ponds	x		
5. Groundwater Monitoring Wells			
5a. Condition of well casing and locks	x		
5b. Condition of well pads and pipe bollards	x		
5c. Access to wells	x		
6. Landfill Access Road			
6a. Condition of main access road	x		
6b. Condition of active disposal area access road	x		
6c. Acceptable dust control measures	x		
7. Other items			
7a.			
7b.			
<b>Bryan Mangrum</b>	<b>Bryan Mangrum</b>		<b>2-25-2025</b>
<b>Print Name of Inspector Completing Form</b>	<b>Signature</b>		<b>Date</b>

# PLUM POINT ENERGY STATION CLASS 3N LANDFILL

## Operations Inspection Form

Inspection Completed By: Bryan Mangrum Date: 2/25/2025

DESCRIPTION	INSPECTION INTERVAL	PASS	FAIL*
<b>Surface Water System</b>			
Drainage Ditches & Culverts	Monthly	<input checked="" type="checkbox"/>	<input type="checkbox"/>
Berms	Monthly	<input checked="" type="checkbox"/>	<input type="checkbox"/>
<b>Leachate Collection System</b>			
Pumps	Monthly	<input checked="" type="checkbox"/>	<input type="checkbox"/>
Totalizers	Monthly	<input checked="" type="checkbox"/>	<input type="checkbox"/>
Transmission/Recirculation Systems	Monthly	<input checked="" type="checkbox"/>	<input type="checkbox"/>
Storage Pond	Monthly	<input checked="" type="checkbox"/>	<input type="checkbox"/>
<b>Landfill Final Cover System</b>			
Erosion	Monthly	<input checked="" type="checkbox"/>	<input type="checkbox"/>
Ponded Water	Monthly	<input checked="" type="checkbox"/>	<input type="checkbox"/>
Settlement	Monthly	<input checked="" type="checkbox"/>	<input type="checkbox"/>
Vegetation	Monthly	<input checked="" type="checkbox"/>	<input type="checkbox"/>
<b>Facility Roads</b>			
Safety	Monthly	<input checked="" type="checkbox"/>	<input type="checkbox"/>
Routing	Monthly	<input checked="" type="checkbox"/>	<input type="checkbox"/>
Condition	Monthly	<input checked="" type="checkbox"/>	<input type="checkbox"/>
Mud	Monthly	<input checked="" type="checkbox"/>	<input type="checkbox"/>
Passable Width	Monthly	<input checked="" type="checkbox"/>	<input type="checkbox"/>
<b>Emergency Response Equipment</b>			
Fire Extinguisher	Check Quarterly	<input checked="" type="checkbox"/>	<input type="checkbox"/>
	Test Annually	<input checked="" type="checkbox"/>	<input type="checkbox"/>
Communication System	Monthly	<input checked="" type="checkbox"/>	<input type="checkbox"/>
List of Emergency Phone Numbers	Monthly	<input checked="" type="checkbox"/>	<input type="checkbox"/>
First Aid Kits	Monthly	<input checked="" type="checkbox"/>	<input type="checkbox"/>
<b>Waste Cell and Plant Grid Markers</b>	Monthly	<input checked="" type="checkbox"/>	<input type="checkbox"/>
<b>Survey Markers</b>	Annually	<input checked="" type="checkbox"/>	<input type="checkbox"/>
<b>Groundwater Monitoring Wells</b>	Semi-Annually	<input checked="" type="checkbox"/>	<input type="checkbox"/>

\*Explain failure on back of form

**PLUM POINT SERVICES COMPANY CLASS 3N LANDFILL  
WEEKLY LANDFILL INSPECTION FORM**

Facility Name: Plum Point Energy Station, Class 3N Landfill			
Facility Address: 2732 South County Road 623, Osceola, AR 72370			
Date: 3-4-2025	Time: 9:00 AM	Weather: rain/wind	
Inspection Representatives			
Charah: Bryan Mangrum			
Others:			
Weekly Inspection Observations			
	Acceptable	Needs Improvement	Comments (See page 2 for Additional Comments)
1. General Operating Issues			
1a. General Stability of landfill slopes	x		
1b. Condition of exposed waste slopes	x		
1c. Condition of exposed waste grading	x		
1d. Signs of erosion or washouts	x		
1e. Signs of leachate seeps	x		
1g. Condition of landfill signage	x		
2. Cover System			
2a. Condition of interim cover	x		
2b. Condition of final cover	N/A		
2c. Condition of vegetation	x		
2d. Condition of erosion control devices	x		
3. Leachate Collection and Storage System			
3a. Condition of leachate pumps	x		
3b. Condition of leachate control panels	x		
3c. Status of leachate levels in disposal cells	x		Levels normal cell 1&3
3d. Condition of leachate collection piping	x		
3e. Condition of cleanouts and headwalls	x		
3f. Condition of leachate transmission piping	x		
3g. Condition of leachate storage system	x		
3h. Leachate Totalizer Flow Reading in gallons	x		
4. Stormwater Control Facilities			
4a. Condition of culverts	x		
4b. Condition of ditches	x		
4c. Condition of Diversion Berms	x		
4d. Condition of letdowns	N/A		
4e. Condition of stormwater ponds	x		
5. Groundwater Monitoring Wells			
5a. Condition of well casing and locks	x		
5b. Condition of well pads and pipe bollards	x		
5c. Access to wells	x		
6. Landfill Access Road			
6a. Condition of main access road	x		
6b. Condition of active disposal area access road	x		
6c. Acceptable dust control measures	x		
7. Other items			
7a.			
7b.			
<b>Bryan Mangrum</b>	<b>Bryan Mangrum</b>		<b>3-4-2025</b>
<b>Print Name of Inspector Completing Form</b>	<b>Signature</b>		<b>Date</b>

**PLUM POINT SERVICES COMPANY CLASS 3N LANDFILL  
WEEKLY LANDFILL INSPECTION FORM**

Facility Name: Plum Point Energy Station, Class 3N Landfill			
Facility Address: 2732 South County Road 623, Osceola, AR 72370			
Date: 3-11-2025	Time: 9:00 AM	Weather: sunny/ clear	
Inspection Representatives			
Charah: Bryan Mangrum			
Others:			
Weekly Inspection Observations			
	Acceptable	Needs Improvement	Comments (See page 2 for Additional Comments)
1. General Operating Issues			
1a. General Stability of landfill slopes	x		
1b. Condition of exposed waste slopes	x		
1c. Condition of exposed waste grading	x		
1d. Signs of erosion or washouts	x		
1e. Signs of leachate seeps	x		
1g. Condition of landfill signage	x		
2. Cover System			
2a. Condition of interim cover	x		
2b. Condition of final cover	N/A		
2c. Condition of vegetation	x		
2d. Condition of erosion control devices	x		
3. Leachate Collection and Storage System			
3a. Condition of leachate pumps	x		
3b. Condition of leachate control panels	x		
3c. Status of leachate levels in disposal cells	x		Levels normal cell 1&3 / cell 3 making good progress
3d. Condition of leachate collection piping	x		
3e. Condition of cleanouts and headwalls	x		
3f. Condition of leachate transmission piping	x		
3g. Condition of leachate storage system	x		
3h. Leachate Totalizer Flow Reading in gallons	x		19529314.6
4. Stormwater Control Facilities			
4a. Condition of culverts	x		
4b. Condition of ditches	x		
4c. Condition of Diversion Berms	x		
4d. Condition of letdowns	N/A		
4e. Condition of stormwater ponds	x		
5. Groundwater Monitoring Wells			
5a. Condition of well casing and locks	x		
5b. Condition of well pads and pipe bollards	x		
5c. Access to wells	x		
6. Landfill Access Road			
6a. Condition of main access road	x		
6b. Condition of active disposal area access road	x		
6c. Acceptable dust control measures	x		
7. Other items			
7a.			
7b.			
<b>Bryan Mangrum</b>	<b>Bryan Mangrum</b>		<b>3-11-2025</b>
<b>Print Name of Inspector Completing Form</b>	<b>Signature</b>		<b>Date</b>

**PLUM POINT SERVICES COMPANY CLASS 3N LANDFILL  
WEEKLY LANDFILL INSPECTION FORM**

Facility Name: Plum Point Energy Station, Class 3N Landfill			
Facility Address: 2732 South County Road 623, Osceola, AR 72370			
Date: 3-18-2025	Time: 10:00 AM	Weather: sunny/ clear	
Inspection Representatives			
Charah: Bryan Mangrum			
Others:			
Weekly Inspection Observations			
	Acceptable	Needs Improvement	Comments (See page 2 for Additional Comments)
1. General Operating Issues			
1a. General Stability of landfill slopes	x		
1b. Condition of exposed waste slopes	x		
1c. Condition of exposed waste grading	x		
1d. Signs of erosion or washouts	x		
1e. Signs of leachate seeps	x		
1g. Condition of landfill signage	x		
2. Cover System			
2a. Condition of interim cover	x		
2b. Condition of final cover	N/A		
2c. Condition of vegetation	x		
2d. Condition of erosion control devices	x		
3. Leachate Collection and Storage System			
3a. Condition of leachate pumps	x		
3b. Condition of leachate control panels	x		
3c. Status of leachate levels in disposal cells	x		Levels normal cell 1&3 / cell 2 making good progress
3d. Condition of leachate collection piping	x		
3e. Condition of cleanouts and headwalls	x		
3f. Condition of leachate transmission piping	x		
3g. Condition of leachate storage system	x		
3h. Leachate Totalizer Flow Reading in gallons	x		20094191.6
4. Stormwater Control Facilities			
4a. Condition of culverts	x		
4b. Condition of ditches	x		
4c. Condition of Diversion Berms	x		
4d. Condition of letdowns	N/A		
4e. Condition of stormwater ponds	x		
5. Groundwater Monitoring Wells			
5a. Condition of well casing and locks	x		
5b. Condition of well pads and pipe bollards	x		
5c. Access to wells	x		
6. Landfill Access Road			
6a. Condition of main access road	x		
6b. Condition of active disposal area access road	x		
6c. Acceptable dust control measures	x		
7. Other items			
7a.			
7b.			
<b>Bryan Mangrum</b> Print Name of Inspector Completing Form	<b>Bryan Mangrum</b> Signature		3-18-2025 Date

**PLUM POINT SERVICES COMPANY CLASS 3N LANDFILL  
WEEKLY LANDFILL INSPECTION FORM**

Facility Name: Plum Point Energy Station, Class 3N Landfill			
Facility Address: 2732 South County Road 623, Osceola, AR 72370			
Date: 3-25-2025	Time: 2:30 PM	Weather: sunny/ clear	
Inspection Representatives			
Charah: Bryan Mangrum			
Others:			
Weekly Inspection Observations			
	Acceptable	Needs Improvement	Comments (See page 2 for Additional Comments)
1. General Operating Issues			
1a. General Stability of landfill slopes	x		
1b. Condition of exposed waste slopes	x		
1c. Condition of exposed waste grading	x		
1d. Signs of erosion or washouts	x		
1e. Signs of leachate seeps	x		
1g. Condition of landfill signage	x		
2. Cover System			
2a. Condition of interim cover	x		
2b. Condition of final cover	N/A		
2c. Condition of vegetation	x		
2d. Condition of erosion control devices	x		
3. Leachate Collection and Storage System			
3a. Condition of leachate pumps	x		
3b. Condition of leachate control panels	x		
3c. Status of leachate levels in disposal cells	x		Levels normal cell 1&3
3d. Condition of leachate collection piping	x		
3e. Condition of cleanouts and headwalls	x		
3f. Condition of leachate transmission piping	x		
3g. Condition of leachate storage system	x		Pond level still high
3h. Leachate Totalizer Flow Reading in gallons	x		20573273.2
4. Stormwater Control Facilities			
4a. Condition of culverts	x		
4b. Condition of ditches	x		
4c. Condition of Diversion Berms	x		
4d. Condition of letdowns	N/A		
4e. Condition of stormwater ponds	x		
5. Groundwater Monitoring Wells			
5a. Condition of well casing and locks	x		
5b. Condition of well pads and pipe bollards	x		
5c. Access to wells	x		
6. Landfill Access Road			
6a. Condition of main access road	x		
6b. Condition of active disposal area access road	x		
6c. Acceptable dust control measures	x		
7. Other items			
7a.			
7b.			
<b>Bryan Mangrum</b> Print Name of Inspector Completing Form	<b>Bryan Mangrum</b> Signature		3-25-2025 Date

# PLUM POINT ENERGY STATION CLASS 3N LANDFILL

## Operations Inspection Form

Inspection Completed By: Bryan Mangrum Date: 3/26/2025

DESCRIPTION	INSPECTION INTERVAL	PASS	FAIL*
<b>Surface Water System</b>			
Drainage Ditches & Culverts	Monthly	<input checked="" type="checkbox"/>	<input type="checkbox"/>
Berms	Monthly	<input checked="" type="checkbox"/>	<input type="checkbox"/>
<b>Leachate Collection System</b>			
Pumps	Monthly	<input checked="" type="checkbox"/>	<input type="checkbox"/>
Totalizers	Monthly	<input checked="" type="checkbox"/>	<input type="checkbox"/>
Transmission/Recirculation Systems	Monthly	<input checked="" type="checkbox"/>	<input type="checkbox"/>
Storage Pond	Monthly	<input checked="" type="checkbox"/>	<input type="checkbox"/>
<b>Landfill Final Cover System</b>			
Erosion	Monthly	<input checked="" type="checkbox"/>	<input type="checkbox"/>
Ponded Water	Monthly	<input checked="" type="checkbox"/>	<input type="checkbox"/>
Settlement	Monthly	<input checked="" type="checkbox"/>	<input type="checkbox"/>
Vegetation	Monthly	<input checked="" type="checkbox"/>	<input type="checkbox"/>
<b>Facility Roads</b>			
Safety	Monthly	<input checked="" type="checkbox"/>	<input type="checkbox"/>
Routing	Monthly	<input checked="" type="checkbox"/>	<input type="checkbox"/>
Condition	Monthly	<input checked="" type="checkbox"/>	<input type="checkbox"/>
Mud	Monthly	<input checked="" type="checkbox"/>	<input type="checkbox"/>
Passable Width	Monthly	<input checked="" type="checkbox"/>	<input type="checkbox"/>
<b>Emergency Response Equipment</b>			
Fire Extinguisher	Check Quarterly	<input checked="" type="checkbox"/>	<input type="checkbox"/>
	Test Annually	<input checked="" type="checkbox"/>	<input type="checkbox"/>
Communication System	Monthly	<input checked="" type="checkbox"/>	<input type="checkbox"/>
List of Emergency Phone Numbers	Monthly	<input checked="" type="checkbox"/>	<input type="checkbox"/>
First Aid Kits	Monthly	<input checked="" type="checkbox"/>	<input type="checkbox"/>
<b>Waste Cell and Plant Grid Markers</b>	Monthly	<input checked="" type="checkbox"/>	<input type="checkbox"/>
<b>Survey Markers</b>	Annually	<input checked="" type="checkbox"/>	<input type="checkbox"/>
<b>Groundwater Monitoring Wells</b>	Semi-Annually	<input checked="" type="checkbox"/>	<input type="checkbox"/>

\*Explain failure on back of form

**PLUM POINT SERVICES COMPANY CLASS 3N LANDFILL  
WEEKLY LANDFILL INSPECTION FORM**

Facility Name: Plum Point Energy Station, Class 3N Landfill			
Facility Address: 2732 South County Road 623, Osceola, AR 72370			
Date: 4-1-2025	Time: 1:30 PM	Weather: sunny/ clear	
Inspection Representatives			
Charah: Bryan Mangrum			
Others:			
Weekly Inspection Observations			
	Acceptable	Needs Improvement	Comments (See page 2 for Additional Comments)
1. General Operating Issues			
1a. General Stability of landfill slopes	x		
1b. Condition of exposed waste slopes	x		
1c. Condition of exposed waste grading	x		
1d. Signs of erosion or washouts	x		
1e. Signs of leachate seeps	x		
1g. Condition of landfill signage	x		
2. Cover System			
2a. Condition of interim cover	x		
2b. Condition of final cover	N/A		
2c. Condition of vegetation	x		
2d. Condition of erosion control devices	x		
3. Leachate Collection and Storage System			
3a. Condition of leachate pumps	x		
3b. Condition of leachate control panels	x		
3c. Status of leachate levels in disposal cells	x		Levels normal cell 1&3
3d. Condition of leachate collection piping	x		
3e. Condition of cleanouts and headwalls	x		
3f. Condition of leachate transmission piping	x		
3g. Condition of leachate storage system	x		Pond level still high
3h. Leachate Totalizer Flow Reading in gallons	x		20995616.4
4. Stormwater Control Facilities			
4a. Condition of culverts	x		
4b. Condition of ditches	x		
4c. Condition of Diversion Berms	x		
4d. Condition of letdowns	N/A		
4e. Condition of stormwater ponds	x		
5. Groundwater Monitoring Wells			
5a. Condition of well casing and locks	x		
5b. Condition of well pads and pipe bollards	x		
5c. Access to wells	x		
6. Landfill Access Road			
6a. Condition of main access road	x		
6b. Condition of active disposal area access road	x		
6c. Acceptable dust control measures	x		
7. Other items			
7a.			
7b.			
<b>Bryan Mangrum</b> Print Name of Inspector Completing Form	<b>Bryan Mangrum</b> Signature		4-1-2025 Date

**PLUM POINT SERVICES COMPANY CLASS 3N LANDFILL  
WEEKLY LANDFILL INSPECTION FORM**

Facility Name: Plum Point Energy Station, Class 3N Landfill			
Facility Address: 2732 South County Road 623, Osceola, AR 72370			
Date: 4-8-2025	Time: 9:00 AM	Weather: sunny/ clear	
Inspection Representatives			
Charah: Bryan Mangrum			
Others:			
Weekly Inspection Observations			
	Acceptable	Needs Improvement	Comments (See page 2 for Additional Comments)
1. General Operating Issues			
1a. General Stability of landfill slopes	x		
1b. Condition of exposed waste slopes	x		
1c. Condition of exposed waste grading	x		
1d. Signs of erosion or washouts	x		
1e. Signs of leachate seeps	x		
1g. Condition of landfill signage	x		
2. Cover System			
2a. Condition of interim cover	x		
2b. Condition of final cover	N/A		
2c. Condition of vegetation	x		
2d. Condition of erosion control devices	x		
3. Leachate Collection and Storage System			
3a. Condition of leachate pumps	x		
3b. Condition of leachate control panels	x		
3c. Status of leachate levels in disposal cells	x		Levels normal cell 1&3
3d. Condition of leachate collection piping	x		
3e. Condition of cleanouts and headwalls	x		
3f. Condition of leachate transmission piping	x		
3g. Condition of leachate storage system	x		Pond level still high
3h. Leachate Totalizer Flow Reading in gallons	x		No power to read out
4. Stormwater Control Facilities			
4a. Condition of culverts	x		
4b. Condition of ditches	x		
4c. Condition of Diversion Berms	x		
4d. Condition of letdowns	N/A		
4e. Condition of stormwater ponds	x		
5. Groundwater Monitoring Wells			
5a. Condition of well casing and locks	x		
5b. Condition of well pads and pipe bollards	x		
5c. Access to wells	x		
6. Landfill Access Road			
6a. Condition of main access road	x		
6b. Condition of active disposal area access road	x		
6c. Acceptable dust control measures	x		
7. Other items			
7a.			
7b.			
<b>Bryan Mangrum</b>	<b>Bryan Mangrum</b>		<b>4-8-2025</b>
<b>Print Name of Inspector Completing Form</b>	<b>Signature</b>		<b>Date</b>

**PLUM POINT SERVICES COMPANY CLASS 3N LANDFILL  
WEEKLY LANDFILL INSPECTION FORM**

Facility Name: Plum Point Energy Station, Class 3N Landfill			
Facility Address: 2732 South County Road 623, Osceola, AR 72370			
Date: 4-15-2025	Time: 2:00 PM	Weather: sunny/ clear	
Inspection Representatives			
Charah: Bryan Mangrum			
Others:			
Weekly Inspection Observations			
	Acceptable	Needs Improvement	Comments (See page 2 for Additional Comments)
1. General Operating Issues			
1a. General Stability of landfill slopes	x		
1b. Condition of exposed waste slopes	x		
1c. Condition of exposed waste grading	x		
1d. Signs of erosion or washouts	x		
1e. Signs of leachate seeps	x		
1g. Condition of landfill signage	x		
2. Cover System			
2a. Condition of interim cover	x		
2b. Condition of final cover	N/A		
2c. Condition of vegetation	x		
2d. Condition of erosion control devices	x		
3. Leachate Collection and Storage System			
3a. Condition of leachate pumps	x		
3b. Condition of leachate control panels	x		
3c. Status of leachate levels in disposal cells	x		Levels normal cell 1&3
3d. Condition of leachate collection piping	x		
3e. Condition of cleanouts and headwalls	x		
3f. Condition of leachate transmission piping	x		
3g. Condition of leachate storage system	x		Pond level still high
3h. Leachate Totalizer Flow Reading in gallons	x		No power to read out
4. Stormwater Control Facilities			
4a. Condition of culverts	x		
4b. Condition of ditches	x		
4c. Condition of Diversion Berms	x		
4d. Condition of letdowns	N/A		
4e. Condition of stormwater ponds	x		
5. Groundwater Monitoring Wells			
5a. Condition of well casing and locks	x		
5b. Condition of well pads and pipe bollards	x		
5c. Access to wells	x		
6. Landfill Access Road			
6a. Condition of main access road	x		
6b. Condition of active disposal area access road	x		
6c. Acceptable dust control measures	x		
7. Other items			
7a.			
7b.			
<b>Bryan Mangrum</b>	<b>Bryan Mangrum</b>		<b>4-15-2025</b>
<b>Print Name of Inspector Completing Form</b>	<b>Signature</b>		<b>Date</b>

**PLUM POINT SERVICES COMPANY CLASS 3N LANDFILL  
WEEKLY LANDFILL INSPECTION FORM**

Facility Name: Plum Point Energy Station, Class 3N Landfill			
Facility Address: 2732 South County Road 623, Osceola, AR 72370			
Date: 4-22-2025	Time: 1:00 PM	Weather: sunny/ clear	
Inspection Representatives			
Charah: Bryan Mangrum			
Others:			
Weekly Inspection Observations			
	Acceptable	Needs Improvement	Comments (See page 2 for Additional Comments)
1. General Operating Issues			
1a. General Stability of landfill slopes	x		
1b. Condition of exposed waste slopes	x		
1c. Condition of exposed waste grading	x		
1d. Signs of erosion or washouts	x		
1e. Signs of leachate seeps	x		
1g. Condition of landfill signage	x		
2. Cover System			
2a. Condition of interim cover	x		
2b. Condition of final cover	N/A		
2c. Condition of vegetation	x		
2d. Condition of erosion control devices	x		
3. Leachate Collection and Storage System			
3a. Condition of leachate pumps	x		
3b. Condition of leachate control panels	x		
3c. Status of leachate levels in disposal cells	x		Levels normal cell 1&3
3d. Condition of leachate collection piping	x		
3e. Condition of cleanouts and headwalls	x		
3f. Condition of leachate transmission piping	x		
3g. Condition of leachate storage system	x		
3h. Leachate Totalizer Flow Reading in gallons	x		No power to read out
4. Stormwater Control Facilities			
4a. Condition of culverts	x		
4b. Condition of ditches	x		
4c. Condition of Diversion Berms	x		
4d. Condition of letdowns	N/A		
4e. Condition of stormwater ponds	x		
5. Groundwater Monitoring Wells			
5a. Condition of well casing and locks	x		
5b. Condition of well pads and pipe bollards	x		
5c. Access to wells	x		
6. Landfill Access Road			
6a. Condition of main access road	x		
6b. Condition of active disposal area access road	x		
6c. Acceptable dust control measures	x		
7. Other items			
7a.			
7b.			
<b>Bryan Mangrum</b>	<b>Bryan Mangrum</b>		<b>4-22-2025</b>
<b>Print Name of Inspector Completing Form</b>	<b>Signature</b>		<b>Date</b>

**PLUM POINT SERVICES COMPANY CLASS 3N LANDFILL  
WEEKLY LANDFILL INSPECTION FORM**

Facility Name: Plum Point Energy Station, Class 3N Landfill			
Facility Address: 2732 South County Road 623, Osceola, AR 72370			
Date: 4-29-2025	Time: 9:00 AM	Weather: sunny/ clear	
Inspection Representatives			
Charah: Bryan Mangrum			
Others:			
Weekly Inspection Observations			
	Acceptable	Needs Improvement	Comments (See page 2 for Additional Comments)
1. General Operating Issues			
1a. General Stability of landfill slopes	x		
1b. Condition of exposed waste slopes	x		
1c. Condition of exposed waste grading	x		
1d. Signs of erosion or washouts	x		
1e. Signs of leachate seeps	x		
1g. Condition of landfill signage	x		
2. Cover System			
2a. Condition of interim cover	x		
2b. Condition of final cover	N/A		
2c. Condition of vegetation	x		
2d. Condition of erosion control devices	x		
3. Leachate Collection and Storage System			
3a. Condition of leachate pumps	x		
3b. Condition of leachate control panels	x		
3c. Status of leachate levels in disposal cells	x		Levels normal cell 1&3 started on pumping cell 2
3d. Condition of leachate collection piping	x		
3e. Condition of cleanouts and headwalls	x		
3f. Condition of leachate transmission piping	x		
3g. Condition of leachate storage system	x		Pond still high
3h. Leachate Totalizer Flow Reading in gallons	x		No power to read out
4. Stormwater Control Facilities			
4a. Condition of culverts	x		
4b. Condition of ditches	x		
4c. Condition of Diversion Berms	x		
4d. Condition of letdowns	N/A		
4e. Condition of stormwater ponds	x		
5. Groundwater Monitoring Wells			
5a. Condition of well casing and locks	x		
5b. Condition of well pads and pipe bollards	x		
5c. Access to wells	x		
6. Landfill Access Road			
6a. Condition of main access road	x		
6b. Condition of active disposal area access road	x		
6c. Acceptable dust control measures	x		
7. Other items			
7a.			
7b.			
<b>Bryan Mangrum</b> Print Name of Inspector Completing Form	<b>Bryan Mangrum</b> Signature		4-29-2025 Date

# PLUM POINT ENERGY STATION CLASS 3N LANDFILL

## Operations Inspection Form

Inspection Completed By: Bryan Mangrum Date: 4/29/2025

DESCRIPTION	INSPECTION INTERVAL	PASS	FAIL*
<b>Surface Water System</b>			
Drainage Ditches & Culverts	Monthly	<input checked="" type="checkbox"/>	<input type="checkbox"/>
Berms	Monthly	<input checked="" type="checkbox"/>	<input type="checkbox"/>
<b>Leachate Collection System</b>			
Pumps	Monthly	<input checked="" type="checkbox"/>	<input type="checkbox"/>
Totalizers	Monthly	<input checked="" type="checkbox"/>	<input type="checkbox"/>
Transmission/Recirculation Systems	Monthly	<input checked="" type="checkbox"/>	<input type="checkbox"/>
Storage Pond	Monthly	<input checked="" type="checkbox"/>	<input type="checkbox"/>
<b>Landfill Final Cover System</b>			
Erosion	Monthly	<input checked="" type="checkbox"/>	<input type="checkbox"/>
Ponded Water	Monthly	<input checked="" type="checkbox"/>	<input type="checkbox"/>
Settlement	Monthly	<input checked="" type="checkbox"/>	<input type="checkbox"/>
Vegetation	Monthly	<input checked="" type="checkbox"/>	<input type="checkbox"/>
<b>Facility Roads</b>			
Safety	Monthly	<input checked="" type="checkbox"/>	<input type="checkbox"/>
Routing	Monthly	<input checked="" type="checkbox"/>	<input type="checkbox"/>
Condition	Monthly	<input checked="" type="checkbox"/>	<input type="checkbox"/>
Mud	Monthly	<input checked="" type="checkbox"/>	<input type="checkbox"/>
Passable Width	Monthly	<input checked="" type="checkbox"/>	<input type="checkbox"/>
<b>Emergency Response Equipment</b>			
Fire Extinguisher	Check Quarterly	<input checked="" type="checkbox"/>	<input type="checkbox"/>
	Test Annually	<input checked="" type="checkbox"/>	<input type="checkbox"/>
Communication System	Monthly	<input checked="" type="checkbox"/>	<input type="checkbox"/>
List of Emergency Phone Numbers	Monthly	<input checked="" type="checkbox"/>	<input type="checkbox"/>
First Aid Kits	Monthly	<input checked="" type="checkbox"/>	<input type="checkbox"/>
<b>Waste Cell and Plant Grid Markers</b>	Monthly	<input checked="" type="checkbox"/>	<input type="checkbox"/>
<b>Survey Markers</b>	Annually	<input checked="" type="checkbox"/>	<input type="checkbox"/>
<b>Groundwater Monitoring Wells</b>	Semi-Annually	<input checked="" type="checkbox"/>	<input type="checkbox"/>

\*Explain failure on back of form

**PLUM POINT SERVICES COMPANY CLASS 3N LANDFILL  
WEEKLY LANDFILL INSPECTION FORM**

Facility Name: Plum Point Energy Station, Class 3N Landfill			
Facility Address: 2732 South County Road 623, Osceola, AR 72370			
Date: 5-6-2025	Time: 9:00 AM	Weather: sunny/ clear	
Inspection Representatives			
Charah: Bryan Mangrum			
Others:			
Weekly Inspection Observations			
	Acceptable	Needs Improvement	Comments (See page 2 for Additional Comments)
1. General Operating Issues			
1a. General Stability of landfill slopes	x		
1b. Condition of exposed waste slopes	x		
1c. Condition of exposed waste grading	x		
1d. Signs of erosion or washouts	x		
1e. Signs of leachate seeps	x		
1g. Condition of landfill signage	x		
2. Cover System			
2a. Condition of interim cover	x		
2b. Condition of final cover	N/A		
2c. Condition of vegetation	x		
2d. Condition of erosion control devices	x		
3. Leachate Collection and Storage System			
3a. Condition of leachate pumps	x		
3b. Condition of leachate control panels	x		
3c. Status of leachate levels in disposal cells	x		Levels normal cell 1&3 cell 2 off
3d. Condition of leachate collection piping	x		
3e. Condition of cleanouts and headwalls	x		
3f. Condition of leachate transmission piping	x		
3g. Condition of leachate storage system	x		Pond still high
3h. Leachate Totalizer Flow Reading in gallons	x		No power to read out
4. Stormwater Control Facilities			
4a. Condition of culverts	x		
4b. Condition of ditches	x		
4c. Condition of Diversion Berms	x		
4d. Condition of letdowns	N/A		
4e. Condition of stormwater ponds	x		
5. Groundwater Monitoring Wells			
5a. Condition of well casing and locks	x		
5b. Condition of well pads and pipe bollards	x		
5c. Access to wells	x		
6. Landfill Access Road			
6a. Condition of main access road	x		
6b. Condition of active disposal area access road	x		
6c. Acceptable dust control measures	x		
7. Other items			
7a.			
7b.			
<b>Bryan Mangrum</b>	<b>Bryan Mangrum</b>		5-6-2025
<b>Print Name of Inspector Completing Form</b>	<b>Signature</b>		<b>Date</b>

**PLUM POINT SERVICES COMPANY CLASS 3N LANDFILL  
WEEKLY LANDFILL INSPECTION FORM**

Facility Name: Plum Point Energy Station, Class 3N Landfill			
Facility Address: 2732 South County Road 623, Osceola, AR 72370			
Date: 5-13-2025	Time: 10:00 AM	Weather: over cast light rain	
Inspection Representatives			
Charah: Bryan Mangrum			
Others:			
Weekly Inspection Observations			
	Acceptable	Needs Improvement	Comments (See page 2 for Additional Comments)
1. General Operating Issues			
1a. General Stability of landfill slopes	x		
1b. Condition of exposed waste slopes	x		
1c. Condition of exposed waste grading	x		
1d. Signs of erosion or washouts	x		
1e. Signs of leachate seeps	x		
1g. Condition of landfill signage	x		
2. Cover System			
2a. Condition of interim cover	x		
2b. Condition of final cover	N/A		
2c. Condition of vegetation	x		
2d. Condition of erosion control devices	x		
3. Leachate Collection and Storage System			
3a. Condition of leachate pumps	x		
3b. Condition of leachate control panels	x		
3c. Status of leachate levels in disposal cells	x		Levels normal cell 1&3 cell 2 pumping
3d. Condition of leachate collection piping	x		
3e. Condition of cleanouts and headwalls	x		
3f. Condition of leachate transmission piping	x		
3g. Condition of leachate storage system	x		
3h. Leachate Totalizer Flow Reading in gallons	x		No power to read out
4. Stormwater Control Facilities			
4a. Condition of culverts	x		
4b. Condition of ditches	x		
4c. Condition of Diversion Berms	x		
4d. Condition of letdowns	N/A		
4e. Condition of stormwater ponds	x		
5. Groundwater Monitoring Wells			
5a. Condition of well casing and locks	x		
5b. Condition of well pads and pipe bollards	x		
5c. Access to wells	x		
6. Landfill Access Road			
6a. Condition of main access road	x		
6b. Condition of active disposal area access road	x		
6c. Acceptable dust control measures	x		
7. Other items			
7a.			
7b.			
<b>Bryan Mangrum</b>	<b>Bryan Mangrum</b>		<b>5-13-2025</b>
<b>Print Name of Inspector Completing Form</b>	<b>Signature</b>		<b>Date</b>

**PLUM POINT SERVICES COMPANY CLASS 3N LANDFILL  
WEEKLY LANDFILL INSPECTION FORM**

Facility Name: Plum Point Energy Station, Class 3N Landfill			
Facility Address: 2732 South County Road 623, Osceola, AR 72370			
Date: 5-20-2025	Time: 9:00 AM	Weather: over cast scattered rain / afternoon storms	
Inspection Representatives			
Charah: Bryan Mangrum			
Others:			
Weekly Inspection Observations			
	Acceptable	Needs Improvement	Comments (See page 2 for Additional Comments)
1. General Operating Issues			
1a. General Stability of landfill slopes	x		
1b. Condition of exposed waste slopes	x		
1c. Condition of exposed waste grading	x		
1d. Signs of erosion or washouts	x		
1e. Signs of leachate seeps	x		
1g. Condition of landfill signage	x		
2. Cover System			
2a. Condition of interim cover	x		
2b. Condition of final cover	N/A		
2c. Condition of vegetation	x		
2d. Condition of erosion control devices	x		
3. Leachate Collection and Storage System			
3a. Condition of leachate pumps	x		
3b. Condition of leachate control panels	x		
3c. Status of leachate levels in disposal cells	x		Levels normal cell 1&3 cell 2 pumping
3d. Condition of leachate collection piping	x		
3e. Condition of cleanouts and headwalls	x		
3f. Condition of leachate transmission piping	x		
3g. Condition of leachate storage system	x		
3h. Leachate Totalizer Flow Reading in gallons	x		21742772.4
4. Stormwater Control Facilities			
4a. Condition of culverts	x		
4b. Condition of ditches	x		
4c. Condition of Diversion Berms	x		
4d. Condition of letdowns	N/A		
4e. Condition of stormwater ponds	x		
5. Groundwater Monitoring Wells			
5a. Condition of well casing and locks	x		
5b. Condition of well pads and pipe bollards	x		
5c. Access to wells	x		
6. Landfill Access Road			
6a. Condition of main access road	x		
6b. Condition of active disposal area access road	x		
6c. Acceptable dust control measures	x		
7. Other items			
7a.			
7b.			
<b>Bryan Mangrum</b>	<b>Bryan Mangrum</b>		<b>5-20-2025</b>
<b>Print Name of Inspector Completing Form</b>	<b>Signature</b>		<b>Date</b>

**PLUM POINT SERVICES COMPANY CLASS 3N LANDFILL  
WEEKLY LANDFILL INSPECTION FORM**

Facility Name: Plum Point Energy Station, Class 3N Landfill			
Facility Address: 2732 South County Road 623, Osceola, AR 72370			
Date: 5-27-2025	Time: 8:00 AM	Weather: overcast scattered rain	
Inspection Representatives			
Charah: Bryan Mangrum			
Others:			
Weekly Inspection Observations			
	Acceptable	Needs Improvement	Comments (See page 2 for Additional Comments)
1. General Operating Issues			
1a. General Stability of landfill slopes	x		
1b. Condition of exposed waste slopes	x		
1c. Condition of exposed waste grading	x		
1d. Signs of erosion or washouts	x		
1e. Signs of leachate seeps	x		
1g. Condition of landfill signage	x		
2. Cover System			
2a. Condition of interim cover	x		
2b. Condition of final cover	N/A		
2c. Condition of vegetation	x		
2d. Condition of erosion control devices	x		
3. Leachate Collection and Storage System			
3a. Condition of leachate pumps	x		
3b. Condition of leachate control panels	x		
3c. Status of leachate levels in disposal cells	x		Cell 3 pumping continually
3d. Condition of leachate collection piping	x		
3e. Condition of cleanouts and headwalls	x		
3f. Condition of leachate transmission piping	x		
3g. Condition of leachate storage system	x		
3h. Leachate Totalizer Flow Reading in gallons	x		22361228.4
4. Stormwater Control Facilities			
4a. Condition of culverts	x		
4b. Condition of ditches	x		
4c. Condition of Diversion Berms	x		
4d. Condition of letdowns	N/A		
4e. Condition of stormwater ponds	x		
5. Groundwater Monitoring Wells			
5a. Condition of well casing and locks	x		
5b. Condition of well pads and pipe bollards	x		
5c. Access to wells	x		
6. Landfill Access Road			
6a. Condition of main access road	x		Placed 4 loads of slag today
6b. Condition of active disposal area access road	x		good
6c. Acceptable dust control measures	x		
7. Other items			
7a.			
7b.			
<b>Bryan Mangrum</b>	<b>Bryan Mangrum</b>		<b>5-27-2025</b>
<b>Print Name of Inspector Completing Form</b>	<b>Signature</b>		<b>Date</b>

# PLUM POINT ENERGY STATION CLASS 3N LANDFILL

## Operations Inspection Form

Inspection Completed By: Bryan Mangrum Date: 5/27/2025

DESCRIPTION	INSPECTION INTERVAL	PASS	FAIL*
<b>Surface Water System</b>			
Drainage Ditches & Culverts	Monthly	<input checked="" type="checkbox"/>	<input type="checkbox"/>
Berms	Monthly	<input checked="" type="checkbox"/>	<input type="checkbox"/>
<b>Leachate Collection System</b>			
Pumps	Monthly	<input checked="" type="checkbox"/>	<input type="checkbox"/>
Totalizers	Monthly	<input checked="" type="checkbox"/>	<input type="checkbox"/>
Transmission/Recirculation Systems	Monthly	<input checked="" type="checkbox"/>	<input type="checkbox"/>
Storage Pond	Monthly	<input checked="" type="checkbox"/>	<input type="checkbox"/>
<b>Landfill Final Cover System</b>			
Erosion	Monthly	<input checked="" type="checkbox"/>	<input type="checkbox"/>
Ponded Water	Monthly	<input checked="" type="checkbox"/>	<input type="checkbox"/>
Settlement	Monthly	<input checked="" type="checkbox"/>	<input type="checkbox"/>
Vegetation	Monthly	<input checked="" type="checkbox"/>	<input type="checkbox"/>
<b>Facility Roads</b>			
Safety	Monthly	<input checked="" type="checkbox"/>	<input type="checkbox"/>
Routing	Monthly	<input checked="" type="checkbox"/>	<input type="checkbox"/>
Condition	Monthly	<input checked="" type="checkbox"/>	<input type="checkbox"/>
Mud	Monthly	<input checked="" type="checkbox"/>	<input type="checkbox"/>
Passable Width	Monthly	<input checked="" type="checkbox"/>	<input type="checkbox"/>
<b>Emergency Response Equipment</b>			
Fire Extinguisher	Check Quarterly	<input checked="" type="checkbox"/>	<input type="checkbox"/>
	Test Annually	<input checked="" type="checkbox"/>	<input type="checkbox"/>
Communication System	Monthly	<input checked="" type="checkbox"/>	<input type="checkbox"/>
List of Emergency Phone Numbers	Monthly	<input checked="" type="checkbox"/>	<input type="checkbox"/>
First Aid Kits	Monthly	<input checked="" type="checkbox"/>	<input type="checkbox"/>
<b>Waste Cell and Plant Grid Markers</b>	Monthly	<input checked="" type="checkbox"/>	<input type="checkbox"/>
<b>Survey Markers</b>	Annually	<input checked="" type="checkbox"/>	<input type="checkbox"/>
<b>Groundwater Monitoring Wells</b>	Semi-Annually	<input checked="" type="checkbox"/>	<input type="checkbox"/>

\*Explain failure on back of form

**PLUM POINT SERVICES COMPANY CLASS 3N LANDFILL  
WEEKLY LANDFILL INSPECTION FORM**

Facility Name: Plum Point Energy Station, Class 3N Landfill			
Facility Address: 2732 South County Road 623, Osceola, AR 72370			
Date: 6-3-2025	Time: 12:00 pm	Weather: clear	
Inspection Representatives			
Charah: Bryan Mangrum			
Others:			
Weekly Inspection Observations			
	Acceptable	Needs Improvement	Comments (See page 2 for Additional Comments)
1. General Operating Issues			
1a. General Stability of landfill slopes	x		
1b. Condition of exposed waste slopes	x		
1c. Condition of exposed waste grading	x		
1d. Signs of erosion or washouts	x		
1e. Signs of leachate seeps	x		
1g. Condition of landfill signage	x		
2. Cover System			
2a. Condition of interim cover	x		
2b. Condition of final cover	N/A		
2c. Condition of vegetation	x		
2d. Condition of erosion control devices	x		
3. Leachate Collection and Storage System			
3a. Condition of leachate pumps	x		
3b. Condition of leachate control panels	x		
3c. Status of leachate levels in disposal cells	x		Cell 3 still pumping continually
3d. Condition of leachate collection piping	x		
3e. Condition of cleanouts and headwalls	x		
3f. Condition of leachate transmission piping	x		
3g. Condition of leachate storage system	x		
3h. Leachate Totalizer Flow Reading in gallons	x		23102538.6
4. Stormwater Control Facilities			
4a. Condition of culverts	x		
4b. Condition of ditches	x		
4c. Condition of Diversion Berms	x		
4d. Condition of letdowns	N/A		
4e. Condition of stormwater ponds	x		
5. Groundwater Monitoring Wells			
5a. Condition of well casing and locks	x		
5b. Condition of well pads and pipe bollards	x		
5c. Access to wells	x		
6. Landfill Access Road			
6a. Condition of main access road	x		
6b. Condition of active disposal area access road	x		
6c. Acceptable dust control measures	x		
7. Other items			
7a.			
7b.			
<b>Bryan Mangrum</b>	<b>Bryan Mangrum</b>		<b>6-3-2025</b>
<b>Print Name of Inspector Completing Form</b>	<b>Signature</b>		<b>Date</b>

**PLUM POINT SERVICES COMPANY CLASS 3N LANDFILL  
WEEKLY LANDFILL INSPECTION FORM**

Facility Name: Plum Point Energy Station, Class 3N Landfill			
Facility Address: 2732 South County Road 623, Osceola, AR 72370			
Date: 6-10-2025	Time: 2:00 pm	Weather: clear	
Inspection Representatives			
Charah: Bryan Mangrum			
Others:			
Weekly Inspection Observations			
	Acceptable	Needs Improvement	Comments (See page 2 for Additional Comments)
1. General Operating Issues			
1a. General Stability of landfill slopes	x		
1b. Condition of exposed waste slopes	x		
1c. Condition of exposed waste grading	x		
1d. Signs of erosion or washouts	x		
1e. Signs of leachate seeps	x		
1g. Condition of landfill signage	x		
2. Cover System			
2a. Condition of interim cover	x		
2b. Condition of final cover	N/A		
2c. Condition of vegetation	x		
2d. Condition of erosion control devices	x		
3. Leachate Collection and Storage System			
3a. Condition of leachate pumps	x		
3b. Condition of leachate control panels	x		
3c. Status of leachate levels in disposal cells	x		Cell 3 not pumping reading 4.4
3d. Condition of leachate collection piping	x		
3e. Condition of cleanouts and headwalls	x		
3f. Condition of leachate transmission piping	x		
3g. Condition of leachate storage system	x		
3h. Leachate Totalizer Flow Reading in gallons	x		23640450.6 gal per minute reading 0.0
4. Stormwater Control Facilities			
4a. Condition of culverts	x		
4b. Condition of ditches	x		
4c. Condition of Diversion Berms	x		
4d. Condition of letdowns	N/A		
4e. Condition of stormwater ponds	x		
5. Groundwater Monitoring Wells			
5a. Condition of well casing and locks	x		
5b. Condition of well pads and pipe bollards	x		
5c. Access to wells	x		
6. Landfill Access Road			
6a. Condition of main access road	x		
6b. Condition of active disposal area access road	x		
6c. Acceptable dust control measures	x		
7. Other items			
7a.			
7b.			
<b>Bryan Mangrum</b>	<b>Bryan Mangrum</b>		<b>6-10-2025</b>
<b>Print Name of Inspector Completing Form</b>	<b>Signature</b>		<b>Date</b>

**PLUM POINT SERVICES COMPANY CLASS 3N LANDFILL  
WEEKLY LANDFILL INSPECTION FORM**

Facility Name: Plum Point Energy Station, Class 3N Landfill			
Facility Address: 2732 South County Road 623, Osceola, AR 72370			
Date: 6-17-2025	Time: 2:00 pm	Weather: overcast	
Inspection Representatives			
Charah: Bryan Mangrum			
Others:			
Weekly Inspection Observations			
	Acceptable	Needs Improvement	Comments (See page 2 for Additional Comments)
1. General Operating Issues			
1a. General Stability of landfill slopes	x		
1b. Condition of exposed waste slopes	x		
1c. Condition of exposed waste grading	x		
1d. Signs of erosion or washouts	x		
1e. Signs of leachate seeps	x		
1g. Condition of landfill signage	x		
2. Cover System			
2a. Condition of interim cover	x		
2b. Condition of final cover	N/A		
2c. Condition of vegetation	x		
2d. Condition of erosion control devices	x		
3. Leachate Collection and Storage System			
3a. Condition of leachate pumps	x		
3b. Condition of leachate control panels	x		
3c. Status of leachate levels in disposal cells	x		Cell 3 high level light is out not working
3d. Condition of leachate collection piping	x		
3e. Condition of cleanouts and headwalls	x		
3f. Condition of leachate transmission piping	x		
3g. Condition of leachate storage system	x		
3h. Leachate Totalizer Flow Reading in gallons	x		24386556.7
4. Stormwater Control Facilities			
4a. Condition of culverts	x		
4b. Condition of ditches	x		
4c. Condition of Diversion Berms	x		
4d. Condition of letdowns	N/A		
4e. Condition of stormwater ponds	x		
5. Groundwater Monitoring Wells			
5a. Condition of well casing and locks	x		
5b. Condition of well pads and pipe bollards	x		
5c. Access to wells	x		
6. Landfill Access Road			
6a. Condition of main access road	x		
6b. Condition of active disposal area access road	x		
6c. Acceptable dust control measures	x		
7. Other items			
7a.			
7b.			
<b>Bryan Mangrum</b> Print Name of Inspector Completing Form	<b>Bryan Mangrum</b> Signature		6-17-2025 Date

**PLUM POINT SERVICES COMPANY CLASS 3N LANDFILL  
WEEKLY LANDFILL INSPECTION FORM**

Facility Name: Plum Point Energy Station, Class 3N Landfill			
Facility Address: 2732 South County Road 623, Osceola, AR 72370			
Date: 6-24-2025	Time: 10:00 AM	Weather: clear	
Inspection Representatives			
Charah: Bryan Mangrum			
Others:			
Weekly Inspection Observations			
	Acceptable	Needs Improvement	Comments (See page 2 for Additional Comments)
1. General Operating Issues			
1a. General Stability of landfill slopes	x		
1b. Condition of exposed waste slopes	x		
1c. Condition of exposed waste grading	x		
1d. Signs of erosion or washouts	x		
1e. Signs of leachate seeps	x		
1g. Condition of landfill signage	x		
2. Cover System			
2a. Condition of interim cover	x		
2b. Condition of final cover	N/A		
2c. Condition of vegetation	x		
2d. Condition of erosion control devices	x		
3. Leachate Collection and Storage System			
3a. Condition of leachate pumps	x		
3b. Condition of leachate control panels	x		
3c. Status of leachate levels in disposal cells	x		Cell 3 high level light is out not working
3d. Condition of leachate collection piping	x		
3e. Condition of cleanouts and headwalls	x		
3f. Condition of leachate transmission piping	x		
3g. Condition of leachate storage system	x		
3h. Leachate Totalizer Flow Reading in gallons	x		24915293.0
4. Stormwater Control Facilities			
4a. Condition of culverts	x		
4b. Condition of ditches	x		
4c. Condition of Diversion Berms	x		
4d. Condition of letdowns	N/A		
4e. Condition of stormwater ponds	x		
5. Groundwater Monitoring Wells			
5a. Condition of well casing and locks	x		
5b. Condition of well pads and pipe bollards	x		
5c. Access to wells	x		
6. Landfill Access Road			
6a. Condition of main access road	x		
6b. Condition of active disposal area access road	x		
6c. Acceptable dust control measures	x		
7. Other items			
7a.			
7b.			
<b>Bryan Mangrum</b> Print Name of Inspector Completing Form	<b>Bryan Mangrum</b> Signature		6-24-2025 Date

# PLUM POINT ENERGY STATION CLASS 3N LANDFILL

## Operations Inspection Form

Inspection Completed By: Bryan Mangrum Date: 6/17/2025

DESCRIPTION	INSPECTION INTERVAL	PASS	FAIL*
<b>Surface Water System</b>			
Drainage Ditches & Culverts	Monthly	<input checked="" type="checkbox"/>	<input type="checkbox"/>
Berms	Monthly	<input checked="" type="checkbox"/>	<input type="checkbox"/>
<b>Leachate Collection System</b>			
Pumps	Monthly	<input checked="" type="checkbox"/>	<input type="checkbox"/>
Totalizers	Monthly	<input checked="" type="checkbox"/>	<input type="checkbox"/>
Transmission/Recirculation Systems	Monthly	<input checked="" type="checkbox"/>	<input type="checkbox"/>
Storage Pond	Monthly	<input checked="" type="checkbox"/>	<input type="checkbox"/>
<b>Landfill Final Cover System</b>			
Erosion	Monthly	<input checked="" type="checkbox"/>	<input type="checkbox"/>
Ponded Water	Monthly	<input checked="" type="checkbox"/>	<input type="checkbox"/>
Settlement	Monthly	<input checked="" type="checkbox"/>	<input type="checkbox"/>
Vegetation	Monthly	<input checked="" type="checkbox"/>	<input type="checkbox"/>
<b>Facility Roads</b>			
Safety	Monthly	<input checked="" type="checkbox"/>	<input type="checkbox"/>
Routing	Monthly	<input checked="" type="checkbox"/>	<input type="checkbox"/>
Condition	Monthly	<input checked="" type="checkbox"/>	<input type="checkbox"/>
Mud	Monthly	<input checked="" type="checkbox"/>	<input type="checkbox"/>
Passable Width	Monthly	<input checked="" type="checkbox"/>	<input type="checkbox"/>
<b>Emergency Response Equipment</b>			
Fire Extinguisher	Check Quarterly	<input checked="" type="checkbox"/>	<input type="checkbox"/>
	Test Annually	<input checked="" type="checkbox"/>	<input type="checkbox"/>
Communication System	Monthly	<input checked="" type="checkbox"/>	<input type="checkbox"/>
List of Emergency Phone Numbers	Monthly	<input checked="" type="checkbox"/>	<input type="checkbox"/>
First Aid Kits	Monthly	<input checked="" type="checkbox"/>	<input type="checkbox"/>
<b>Waste Cell and Plant Grid Markers</b>	Monthly	<input checked="" type="checkbox"/>	<input type="checkbox"/>
<b>Survey Markers</b>	Annually	<input checked="" type="checkbox"/>	<input type="checkbox"/>
<b>Groundwater Monitoring Wells</b>	Semi-Annually	<input checked="" type="checkbox"/>	<input type="checkbox"/>

\*Explain failure on back of form

**PLUM POINT SERVICES COMPANY CLASS 3N LANDFILL  
WEEKLY LANDFILL INSPECTION FORM**

Facility Name: Plum Point Energy Station, Class 3N Landfill			
Facility Address: 2732 South County Road 623, Osceola, AR 72370			
Date: 7-1-2025	Time: 1:30 PM	Weather: clear	
Inspection Representatives			
Charah: Bryan Mangrum			
Others:			
Weekly Inspection Observations			
	Acceptable	Needs Improvement	Comments (See page 2 for Additional Comments)
1. General Operating Issues			
1a. General Stability of landfill slopes	x		
1b. Condition of exposed waste slopes	x		
1c. Condition of exposed waste grading	x		
1d. Signs of erosion or washouts	x		
1e. Signs of leachate seeps	x		
1g. Condition of landfill signage	x		
2. Cover System			
2a. Condition of interim cover	x		
2b. Condition of final cover	N/A		
2c. Condition of vegetation	x		
2d. Condition of erosion control devices	x		
3. Leachate Collection and Storage System			
3a. Condition of leachate pumps	x		
3b. Condition of leachate control panels	x		
3c. Status of leachate levels in disposal cells	x		Cell 3 high level light is out not working
3d. Condition of leachate collection piping	x		
3e. Condition of cleanouts and headwalls	x		
3f. Condition of leachate transmission piping	x		
3g. Condition of leachate storage system	x		
3h. Leachate Totalizer Flow Reading in gallons	x		25674385.2
4. Stormwater Control Facilities			
4a. Condition of culverts	x		
4b. Condition of ditches	x		
4c. Condition of Diversion Berms	x		
4d. Condition of letdowns	N/A		
4e. Condition of stormwater ponds	x		
5. Groundwater Monitoring Wells			
5a. Condition of well casing and locks	x		
5b. Condition of well pads and pipe bollards	x		
5c. Access to wells	x		
6. Landfill Access Road			
6a. Condition of main access road	x		
6b. Condition of active disposal area access road	x		
6c. Acceptable dust control measures	x		
7. Other items			
7a.			
7b.			
<b>Bryan Mangrum</b>	<b>Bryan Mangrum</b>		<b>7-1-2025</b>
<b>Print Name of Inspector Completing Form</b>	<b>Signature</b>		<b>Date</b>

**PLUM POINT SERVICES COMPANY CLASS 3N LANDFILL  
WEEKLY LANDFILL INSPECTION FORM**

Facility Name: Plum Point Energy Station, Class 3N Landfill			
Facility Address: 2732 South County Road 623, Osceola, AR 72370			
Date: 7-8-2025	Time: 8:30 AM	Weather: clear	
Inspection Representatives			
Charah: Bryan Mangrum			
Others:			
Weekly Inspection Observations			
	Acceptable	Needs Improvement	Comments (See page 2 for Additional Comments)
1. General Operating Issues			
1a. General Stability of landfill slopes	x		
1b. Condition of exposed waste slopes	x		
1c. Condition of exposed waste grading	x		
1d. Signs of erosion or washouts	x		
1e. Signs of leachate seeps	x		
1g. Condition of landfill signage	x		
2. Cover System			
2a. Condition of interim cover	x		
2b. Condition of final cover	N/A		
2c. Condition of vegetation	x		
2d. Condition of erosion control devices	x		
3. Leachate Collection and Storage System			
3a. Condition of leachate pumps	x		
3b. Condition of leachate control panels	x		
3c. Status of leachate levels in disposal cells	x		
3d. Condition of leachate collection piping	x		
3e. Condition of cleanouts and headwalls	x		
3f. Condition of leachate transmission piping	x		
3g. Condition of leachate storage system	x		
3h. Leachate Totalizer Flow Reading in gallons	x		26576275.4
4. Stormwater Control Facilities			
4a. Condition of culverts	x		
4b. Condition of ditches	x		
4c. Condition of Diversion Berms	x		
4d. Condition of letdowns	N/A		
4e. Condition of stormwater ponds	x		
5. Groundwater Monitoring Wells			
5a. Condition of well casing and locks	x		
5b. Condition of well pads and pipe bollards	x		
5c. Access to wells	x		
6. Landfill Access Road			
6a. Condition of main access road	x		
6b. Condition of active disposal area access road	x		
6c. Acceptable dust control measures	x		
7. Other items			
7a.			
7b.			
<b>Bryan Mangrum</b> Print Name of Inspector Completing Form	<b>Bryan Mangrum</b> Signature		7-8-2025 Date

**PLUM POINT SERVICES COMPANY CLASS 3N LANDFILL  
WEEKLY LANDFILL INSPECTION FORM**

Facility Name: Plum Point Energy Station, Class 3N Landfill			
Facility Address: 2732 South County Road 623, Osceola, AR 72370			
Date: 7-15-2025	Time: 2:30 PM	Weather: clear/ and hazey	
Inspection Representatives			
Charah: Bryan Mangrum			
Others:			
Weekly Inspection Observations			
	Acceptable	Needs Improvement	Comments (See page 2 for Additional Comments)
1. General Operating Issues			
1a. General Stability of landfill slopes	x		
1b. Condition of exposed waste slopes	x		
1c. Condition of exposed waste grading	x		
1d. Signs of erosion or washouts	x		
1e. Signs of leachate seeps	x		
1g. Condition of landfill signage	x		
2. Cover System			
2a. Condition of interim cover	x		
2b. Condition of final cover	N/A		
2c. Condition of vegetation	x		
2d. Condition of erosion control devices	x		
3. Leachate Collection and Storage System			
3a. Condition of leachate pumps	x		
3b. Condition of leachate control panels	x		Cell 3 still malfunctioning
3c. Status of leachate levels in disposal cells	x		
3d. Condition of leachate collection piping	x		
3e. Condition of cleanouts and headwalls	x		
3f. Condition of leachate transmission piping	x		
3g. Condition of leachate storage system	x		
3h. Leachate Totalizer Flow Reading in gallons	x		27505860.0
4. Stormwater Control Facilities			
4a. Condition of culverts	x		
4b. Condition of ditches	x		
4c. Condition of Diversion Berms	x		
4d. Condition of letdowns	N/A		
4e. Condition of stormwater ponds	x		
5. Groundwater Monitoring Wells			
5a. Condition of well casing and locks	x		
5b. Condition of well pads and pipe bollards	x		
5c. Access to wells	x		
6. Landfill Access Road			
6a. Condition of main access road	x		
6b. Condition of active disposal area access road	x		
6c. Acceptable dust control measures	x		
7. Other items			
7a.			
7b.			
<b>Bryan Mangrum</b>	<b>Bryan Mangrum</b>		<b>7-15-2025</b>
<b>Print Name of Inspector Completing Form</b>	<b>Signature</b>		<b>Date</b>

**PLUM POINT SERVICES COMPANY CLASS 3N LANDFILL  
WEEKLY LANDFILL INSPECTION FORM**

Facility Name: Plum Point Energy Station, Class 3N Landfill			
Facility Address: 2732 South County Road 623, Osceola, AR 72370			
Date: 7-22-2025	Time: 9:30 AM	Weather: clear	
Inspection Representatives			
Charah: Bryan Mangrum			
Others:			
Weekly Inspection Observations			
	Acceptable	Needs Improvement	Comments (See page 2 for Additional Comments)
1. General Operating Issues			
1a. General Stability of landfill slopes	x		
1b. Condition of exposed waste slopes	x		
1c. Condition of exposed waste grading	x		
1d. Signs of erosion or washouts	x		
1e. Signs of leachate seeps	x		
1g. Condition of landfill signage	x		
2. Cover System			
2a. Condition of interim cover	x		
2b. Condition of final cover	N/A		
2c. Condition of vegetation	x		
2d. Condition of erosion control devices	x		
3. Leachate Collection and Storage System			
3a. Condition of leachate pumps	x		
3b. Condition of leachate control panels	x		Cell 3 still malfunctioning
3c. Status of leachate levels in disposal cells	x		
3d. Condition of leachate collection piping	x		
3e. Condition of cleanouts and headwalls	x		
3f. Condition of leachate transmission piping	x		
3g. Condition of leachate storage system	x		
3h. Leachate Totalizer Flow Reading in gallons	x		28414509.7
4. Stormwater Control Facilities			
4a. Condition of culverts	x		
4b. Condition of ditches	x		
4c. Condition of Diversion Berms	x		
4d. Condition of letdowns	N/A		
4e. Condition of stormwater ponds	x		
5. Groundwater Monitoring Wells			
5a. Condition of well casing and locks	x		
5b. Condition of well pads and pipe bollards	x		
5c. Access to wells	x		
6. Landfill Access Road			
6a. Condition of main access road	x		
6b. Condition of active disposal area access road	x		
6c. Acceptable dust control measures	x		
7. Other items			
7a.			
7b.			
<b>Bryan Mangrum</b> Print Name of Inspector Completing Form	<b>Bryan Mangrum</b> Signature		7-22-2025 Date

**PLUM POINT SERVICES COMPANY CLASS 3N LANDFILL  
WEEKLY LANDFILL INSPECTION FORM**

Facility Name: Plum Point Energy Station, Class 3N Landfill			
Facility Address: 2732 South County Road 623, Osceola, AR 72370			
Date: 7-29-2025	Time: 8:30 AM	Weather: clear	
Inspection Representatives			
Charah: Bryan Mangrum			
Others:			
Weekly Inspection Observations			
	Acceptable	Needs Improvement	Comments (See page 2 for Additional Comments)
1. General Operating Issues			
1a. General Stability of landfill slopes	x		
1b. Condition of exposed waste slopes	x		
1c. Condition of exposed waste grading	x		
1d. Signs of erosion or washouts	x		
1e. Signs of leachate seeps	x		
1g. Condition of landfill signage	x		
2. Cover System			
2a. Condition of interim cover	x		
2b. Condition of final cover	N/A		
2c. Condition of vegetation	x		
2d. Condition of erosion control devices	x		
3. Leachate Collection and Storage System			
3a. Condition of leachate pumps	x		
3b. Condition of leachate control panels	x		
3c. Status of leachate levels in disposal cells	x		
3d. Condition of leachate collection piping	x		
3e. Condition of cleanouts and headwalls	x		
3f. Condition of leachate transmission piping	x		
3g. Condition of leachate storage system	x		
3h. Leachate Totalizer Flow Reading in gallons	x		293227944.8
4. Stormwater Control Facilities			
4a. Condition of culverts	x		
4b. Condition of ditches	x		
4c. Condition of Diversion Berms	x		
4d. Condition of letdowns	N/A		
4e. Condition of stormwater ponds	x		
5. Groundwater Monitoring Wells			
5a. Condition of well casing and locks	x		
5b. Condition of well pads and pipe bollards	x		
5c. Access to wells	x		
6. Landfill Access Road			
6a. Condition of main access road	x		
6b. Condition of active disposal area access road	x		
6c. Acceptable dust control measures	x		
7. Other items			
7a.			
7b.			
<b>Bryan Mangrum</b>	<b>Bryan Mangrum</b>		<b>7-22-2025</b>
<b>Print Name of Inspector Completing Form</b>	<b>Signature</b>		<b>Date</b>

# PLUM POINT ENERGY STATION CLASS 3N LANDFILL

## Operations Inspection Form

Inspection Completed By: Bryan Mangrum Date: 7/29/2025

DESCRIPTION	INSPECTION INTERVAL	PASS	FAIL*
<b>Surface Water System</b>			
Drainage Ditches & Culverts	Monthly	<input checked="" type="checkbox"/>	<input type="checkbox"/>
Berms	Monthly	<input checked="" type="checkbox"/>	<input type="checkbox"/>
<b>Leachate Collection System</b>			
Pumps	Monthly	<input checked="" type="checkbox"/>	<input type="checkbox"/>
Totalizers	Monthly	<input checked="" type="checkbox"/>	<input type="checkbox"/>
Transmission/Recirculation Systems	Monthly	<input checked="" type="checkbox"/>	<input type="checkbox"/>
Storage Pond	Monthly	<input checked="" type="checkbox"/>	<input type="checkbox"/>
<b>Landfill Final Cover System</b>			
Erosion	Monthly	<input checked="" type="checkbox"/>	<input type="checkbox"/>
Ponded Water	Monthly	<input checked="" type="checkbox"/>	<input type="checkbox"/>
Settlement	Monthly	<input checked="" type="checkbox"/>	<input type="checkbox"/>
Vegetation	Monthly	<input checked="" type="checkbox"/>	<input type="checkbox"/>
<b>Facility Roads</b>			
Safety	Monthly	<input checked="" type="checkbox"/>	<input type="checkbox"/>
Routing	Monthly	<input checked="" type="checkbox"/>	<input type="checkbox"/>
Condition	Monthly	<input checked="" type="checkbox"/>	<input type="checkbox"/>
Mud	Monthly	<input checked="" type="checkbox"/>	<input type="checkbox"/>
Passable Width	Monthly	<input checked="" type="checkbox"/>	<input type="checkbox"/>
<b>Emergency Response Equipment</b>			
Fire Extinguisher	Check Quarterly	<input checked="" type="checkbox"/>	<input type="checkbox"/>
	Test Annually	<input checked="" type="checkbox"/>	<input type="checkbox"/>
Communication System	Monthly	<input checked="" type="checkbox"/>	<input type="checkbox"/>
List of Emergency Phone Numbers	Monthly	<input checked="" type="checkbox"/>	<input type="checkbox"/>
First Aid Kits	Monthly	<input checked="" type="checkbox"/>	<input type="checkbox"/>
<b>Waste Cell and Plant Grid Markers</b>	Monthly	<input checked="" type="checkbox"/>	<input type="checkbox"/>
<b>Survey Markers</b>	Annually	<input checked="" type="checkbox"/>	<input type="checkbox"/>
<b>Groundwater Monitoring Wells</b>	Semi-Annually	<input checked="" type="checkbox"/>	<input type="checkbox"/>

\*Explain failure on back of form

**PLUM POINT SERVICES COMPANY CLASS 3N LANDFILL  
WEEKLY LANDFILL INSPECTION FORM**

Facility Name: Plum Point Energy Station, Class 3N Landfill			
Facility Address: 2732 South County Road 623, Osceola, AR 72370			
Date: 8-05-2025	Time: 8:30 AM	Weather: clear	
Inspection Representatives			
Charah: Bryan Mangrum			
Others:			
Weekly Inspection Observations			
	Acceptable	Needs Improvement	Comments (See page 2 for Additional Comments)
1. General Operating Issues			
1a. General Stability of landfill slopes	x		
1b. Condition of exposed waste slopes	x		
1c. Condition of exposed waste grading	x		
1d. Signs of erosion or washouts	x		
1e. Signs of leachate seeps	x		
1g. Condition of landfill signage	x		
2. Cover System			
2a. Condition of interim cover	x		
2b. Condition of final cover	N/A		
2c. Condition of vegetation	x		
2d. Condition of erosion control devices	x		
3. Leachate Collection and Storage System			
3a. Condition of leachate pumps	x		
3b. Condition of leachate control panels	x		
3c. Status of leachate levels in disposal cells	x		
3d. Condition of leachate collection piping	x		
3e. Condition of cleanouts and headwalls	x		
3f. Condition of leachate transmission piping	x		
3g. Condition of leachate storage system	x		
3h. Leachate Totalizer Flow Reading in gallons	x		29563798.9
4. Stormwater Control Facilities			
4a. Condition of culverts	x		
4b. Condition of ditches	x		
4c. Condition of Diversion Berms	x		
4d. Condition of letdowns	N/A		
4e. Condition of stormwater ponds	x		
5. Groundwater Monitoring Wells			
5a. Condition of well casing and locks	x		
5b. Condition of well pads and pipe bollards	x		
5c. Access to wells	x		
6. Landfill Access Road			
6a. Condition of main access road	x		
6b. Condition of active disposal area access road	x		
6c. Acceptable dust control measures	x		
7. Other items			
7a.			
7b.			
<b>Bryan Mangrum</b>	<b>Bryan Mangrum</b>		<b>8-05-2025</b>
<b>Print Name of Inspector Completing Form</b>	<b>Signature</b>		<b>Date</b>

**PLUM POINT SERVICES COMPANY CLASS 3N LANDFILL  
WEEKLY LANDFILL INSPECTION FORM**

Facility Name: Plum Point Energy Station, Class 3N Landfill			
Facility Address: 2732 South County Road 623, Osceola, AR 72370			
Date: 8-12-2025	Time: 8:00 AM	Weather: clear	
Inspection Representatives			
Charah: Bryan Mangrum			
Others:			
Weekly Inspection Observations			
	Acceptable	Needs Improvement	Comments (See page 2 for Additional Comments)
1. General Operating Issues			
1a. General Stability of landfill slopes	x		
1b. Condition of exposed waste slopes	x		
1c. Condition of exposed waste grading	x		
1d. Signs of erosion or washouts	x		
1e. Signs of leachate seeps	x		
1g. Condition of landfill signage	x		
2. Cover System			
2a. Condition of interim cover	x		
2b. Condition of final cover	N/A		
2c. Condition of vegetation	x		
2d. Condition of erosion control devices	x		
3. Leachate Collection and Storage System			
3a. Condition of leachate pumps	x		
3b. Condition of leachate control panels	x		
3c. Status of leachate levels in disposal cells	x		
3d. Condition of leachate collection piping	x		
3e. Condition of cleanouts and headwalls	x		
3f. Condition of leachate transmission piping	x		
3g. Condition of leachate storage system	x		
3h. Leachate Totalizer Flow Reading in gallons	x		29563798.9
4. Stormwater Control Facilities			
4a. Condition of culverts	x		
4b. Condition of ditches	x		
4c. Condition of Diversion Berms	x		
4d. Condition of letdowns	N/A		
4e. Condition of stormwater ponds	x		
5. Groundwater Monitoring Wells			
5a. Condition of well casing and locks	x		
5b. Condition of well pads and pipe bollards	x		
5c. Access to wells	x		
6. Landfill Access Road			
6a. Condition of main access road	x		
6b. Condition of active disposal area access road	x		
6c. Acceptable dust control measures	x		
7. Other items			
7a.			
7b.			
<b>Bryan Mangrum</b>	<b>Bryan Mangrum</b>		<b>8-12-2025</b>
<b>Print Name of Inspector Completing Form</b>	<b>Signature</b>		<b>Date</b>

**PLUM POINT SERVICES COMPANY CLASS 3N LANDFILL  
WEEKLY LANDFILL INSPECTION FORM**

Facility Name: Plum Point Energy Station, Class 3N Landfill			
Facility Address: 2732 South County Road 623, Osceola, AR 72370			
Date: 8-19-2025	Time: 8:00 AM	Weather: clear	
Inspection Representatives			
Charah: Bryan Mangrum			
Others:			
Weekly Inspection Observations			
	Acceptable	Needs Improvement	Comments (See page 2 for Additional Comments)
1. General Operating Issues			
1a. General Stability of landfill slopes	x		
1b. Condition of exposed waste slopes	x		
1c. Condition of exposed waste grading	x		
1d. Signs of erosion or washouts	x		
1e. Signs of leachate seeps	x		
1g. Condition of landfill signage	x		
2. Cover System			
2a. Condition of interim cover	x		
2b. Condition of final cover	N/A		
2c. Condition of vegetation	x		
2d. Condition of erosion control devices	x		
3. Leachate Collection and Storage System			
3a. Condition of leachate pumps	x		
3b. Condition of leachate control panels	x		
3c. Status of leachate levels in disposal cells	x		
3d. Condition of leachate collection piping	x		
3e. Condition of cleanouts and headwalls	x		
3f. Condition of leachate transmission piping	x		
3g. Condition of leachate storage system	x		
3h. Leachate Totalizer Flow Reading in gallons	x		29563798.9
4. Stormwater Control Facilities			
4a. Condition of culverts	x		
4b. Condition of ditches	x		
4c. Condition of Diversion Berms	x		
4d. Condition of letdowns	N/A		
4e. Condition of stormwater ponds	x		
5. Groundwater Monitoring Wells			
5a. Condition of well casing and locks	x		
5b. Condition of well pads and pipe bollards	x		
5c. Access to wells	x		
6. Landfill Access Road			
6a. Condition of main access road	x		
6b. Condition of active disposal area access road	x		
6c. Acceptable dust control measures	x		
7. Other items			
7a.			
7b.			
<b>Bryan Mangrum</b>	<b>Bryan Mangrum</b>		<b>8-19-2025</b>
<b>Print Name of Inspector Completing Form</b>	<b>Signature</b>		<b>Date</b>

**PLUM POINT SERVICES COMPANY CLASS 3N LANDFILL  
WEEKLY LANDFILL INSPECTION FORM**

Facility Name: Plum Point Energy Station, Class 3N Landfill			
Facility Address: 2732 South County Road 623, Osceola, AR 72370			
Date: 8-26-2025	Time: 10:00 AM	Weather: clear	
Inspection Representatives			
Charah: Bryan Mangrum			
Others:			
Weekly Inspection Observations			
	Acceptable	Needs Improvement	Comments (See page 2 for Additional Comments)
1. General Operating Issues			
1a. General Stability of landfill slopes	x		
1b. Condition of exposed waste slopes	x		
1c. Condition of exposed waste grading	x		
1d. Signs of erosion or washouts	x		
1e. Signs of leachate seeps	x		
1g. Condition of landfill signage	x		
2. Cover System			
2a. Condition of interim cover	x		
2b. Condition of final cover	N/A		
2c. Condition of vegetation	x		
2d. Condition of erosion control devices	x		
3. Leachate Collection and Storage System			
3a. Condition of leachate pumps	x		
3b. Condition of leachate control panels	x		
3c. Status of leachate levels in disposal cells	x		
3d. Condition of leachate collection piping	x		
3e. Condition of cleanouts and headwalls	x		
3f. Condition of leachate transmission piping	x		
3g. Condition of leachate storage system	x		
3h. Leachate Totalizer Flow Reading in gallons	x		29563798.9
4. Stormwater Control Facilities			
4a. Condition of culverts	x		
4b. Condition of ditches	x		
4c. Condition of Diversion Berms	x		
4d. Condition of letdowns	N/A		
4e. Condition of stormwater ponds	x		
5. Groundwater Monitoring Wells			
5a. Condition of well casing and locks	x		
5b. Condition of well pads and pipe bollards	x		
5c. Access to wells	x		
6. Landfill Access Road			
6a. Condition of main access road	x		
6b. Condition of active disposal area access road	x		
6c. Acceptable dust control measures	x		
7. Other items			
7a.			
7b.			
<b>Bryan Mangrum</b>	<b>Bryan Mangrum</b>		<b>8-26-2025</b>
<b>Print Name of Inspector Completing Form</b>	<b>Signature</b>		<b>Date</b>

# PLUM POINT ENERGY STATION CLASS 3N LANDFILL

## Operations Inspection Form

Inspection Completed By: Bryan Mangrum Date: 8/26/2025

DESCRIPTION	INSPECTION INTERVAL	PASS	FAIL*
<b>Surface Water System</b>			
Drainage Ditches & Culverts	Monthly	<input checked="" type="checkbox"/>	<input type="checkbox"/>
Berms	Monthly	<input checked="" type="checkbox"/>	<input type="checkbox"/>
<b>Leachate Collection System</b>			
Pumps	Monthly	<input checked="" type="checkbox"/>	<input type="checkbox"/>
Totalizers	Monthly	<input checked="" type="checkbox"/>	<input type="checkbox"/>
Transmission/Recirculation Systems	Monthly	<input checked="" type="checkbox"/>	<input type="checkbox"/>
Storage Pond	Monthly	<input checked="" type="checkbox"/>	<input type="checkbox"/>
<b>Landfill Final Cover System</b>			
Erosion	Monthly	<input checked="" type="checkbox"/>	<input type="checkbox"/>
Ponded Water	Monthly	<input checked="" type="checkbox"/>	<input type="checkbox"/>
Settlement	Monthly	<input checked="" type="checkbox"/>	<input type="checkbox"/>
Vegetation	Monthly	<input checked="" type="checkbox"/>	<input type="checkbox"/>
<b>Facility Roads</b>			
Safety	Monthly	<input checked="" type="checkbox"/>	<input type="checkbox"/>
Routing	Monthly	<input checked="" type="checkbox"/>	<input type="checkbox"/>
Condition	Monthly	<input checked="" type="checkbox"/>	<input type="checkbox"/>
Mud	Monthly	<input checked="" type="checkbox"/>	<input type="checkbox"/>
Passable Width	Monthly	<input checked="" type="checkbox"/>	<input type="checkbox"/>
<b>Emergency Response Equipment</b>			
Fire Extinguisher	Check Quarterly	<input checked="" type="checkbox"/>	<input type="checkbox"/>
	Test Annually	<input checked="" type="checkbox"/>	<input type="checkbox"/>
Communication System	Monthly	<input checked="" type="checkbox"/>	<input type="checkbox"/>
List of Emergency Phone Numbers	Monthly	<input checked="" type="checkbox"/>	<input type="checkbox"/>
First Aid Kits	Monthly	<input checked="" type="checkbox"/>	<input type="checkbox"/>
<b>Waste Cell and Plant Grid Markers</b>	Monthly	<input checked="" type="checkbox"/>	<input type="checkbox"/>
<b>Survey Markers</b>	Annually	<input checked="" type="checkbox"/>	<input type="checkbox"/>
<b>Groundwater Monitoring Wells</b>	Semi-Annually	<input checked="" type="checkbox"/>	<input type="checkbox"/>

\*Explain failure on back of form

**PLUM POINT SERVICES COMPANY CLASS 3N LANDFILL  
WEEKLY LANDFILL INSPECTION FORM**

Facility Name: Plum Point Energy Station, Class 3N Landfill			
Facility Address: 2732 South County Road 623, Osceola, AR 72370			
Date: 9-2-2025	Time: 10:00 AM	Weather: clear	
Inspection Representatives			
Charah: Bryan Mangrum			
Others:			
Weekly Inspection Observations			
	Acceptable	Needs Improvement	Comments (See page 2 for Additional Comments)
1. General Operating Issues			
1a. General Stability of landfill slopes	x		
1b. Condition of exposed waste slopes	x		
1c. Condition of exposed waste grading	x		
1d. Signs of erosion or washouts	x		
1e. Signs of leachate seeps	x		
1g. Condition of landfill signage	x		
2. Cover System			
2a. Condition of interim cover	x		
2b. Condition of final cover	N/A		
2c. Condition of vegetation	x		
2d. Condition of erosion control devices	x		
3. Leachate Collection and Storage System			
3a. Condition of leachate pumps	x		
3b. Condition of leachate control panels	x		
3c. Status of leachate levels in disposal cells	x		
3d. Condition of leachate collection piping	x		
3e. Condition of cleanouts and headwalls	x		
3f. Condition of leachate transmission piping	x		
3g. Condition of leachate storage system	x		
3h. Leachate Totalizer Flow Reading in gallons	x		29563798.9
4. Stormwater Control Facilities			
4a. Condition of culverts	x		
4b. Condition of ditches	x		
4c. Condition of Diversion Berms	x		
4d. Condition of letdowns	N/A		
4e. Condition of stormwater ponds	x		
5. Groundwater Monitoring Wells			
5a. Condition of well casing and locks	x		
5b. Condition of well pads and pipe bollards	x		
5c. Access to wells	x		
6. Landfill Access Road			
6a. Condition of main access road	x		
6b. Condition of active disposal area access road	x		
6c. Acceptable dust control measures	x		
7. Other items			
7a.			
7b.			
<b>Bryan Mangrum</b>	<b>Bryan Mangrum</b>		9-2-2025
<b>Print Name of Inspector Completing Form</b>	<b>Signature</b>		<b>Date</b>

**PLUM POINT SERVICES COMPANY CLASS 3N LANDFILL  
WEEKLY LANDFILL INSPECTION FORM**

Facility Name: Plum Point Energy Station, Class 3N Landfill			
Facility Address: 2732 South County Road 623, Osceola, AR 72370			
Date: 9-9-2025	Time: 1:00 PM	Weather: clear	
Inspection Representatives			
Charah: Bryan Mangrum			
Others:			
Weekly Inspection Observations			
	Acceptable	Needs Improvement	Comments (See page 2 for Additional Comments)
1. General Operating Issues			
1a. General Stability of landfill slopes	x		
1b. Condition of exposed waste slopes	x		
1c. Condition of exposed waste grading	x		
1d. Signs of erosion or washouts	x		
1e. Signs of leachate seeps	x		
1g. Condition of landfill signage	x		
2. Cover System			
2a. Condition of interim cover	x		
2b. Condition of final cover	N/A		
2c. Condition of vegetation	x		
2d. Condition of erosion control devices	x		
3. Leachate Collection and Storage System			
3a. Condition of leachate pumps	x		
3b. Condition of leachate control panels	x		
3c. Status of leachate levels in disposal cells	x		
3d. Condition of leachate collection piping	x		
3e. Condition of cleanouts and headwalls	x		
3f. Condition of leachate transmission piping	x		
3g. Condition of leachate storage system	x		
3h. Leachate Totalizer Flow Reading in gallons	x		29563798.9
4. Stormwater Control Facilities			
4a. Condition of culverts	x		
4b. Condition of ditches	x		
4c. Condition of Diversion Berms	x		
4d. Condition of letdowns	N/A		
4e. Condition of stormwater ponds	x		
5. Groundwater Monitoring Wells			
5a. Condition of well casing and locks	x		
5b. Condition of well pads and pipe bollards	x		
5c. Access to wells	x		
6. Landfill Access Road			
6a. Condition of main access road	x		
6b. Condition of active disposal area access road	x		
6c. Acceptable dust control measures	x		
7. Other items			
7a.			
7b.			
<b>Bryan Mangrum</b>	<b>Bryan Mangrum</b>		9-9-2025
<b>Print Name of Inspector Completing Form</b>	<b>Signature</b>		<b>Date</b>

**PLUM POINT SERVICES COMPANY CLASS 3N LANDFILL  
WEEKLY LANDFILL INSPECTION FORM**

Facility Name: Plum Point Energy Station, Class 3N Landfill			
Facility Address: 2732 South County Road 623, Osceola, AR 72370			
Date: 9-16-2025	Time: 10:00 AM	Weather: clear	
Inspection Representatives			
Charah: Bryan Mangrum			
Others:			
Weekly Inspection Observations			
	Acceptable	Needs Improvement	Comments (See page 2 for Additional Comments)
1. General Operating Issues			
1a. General Stability of landfill slopes	x		
1b. Condition of exposed waste slopes	x		
1c. Condition of exposed waste grading	x		
1d. Signs of erosion or washouts	x		
1e. Signs of leachate seeps	x		
1g. Condition of landfill signage	x		
2. Cover System			
2a. Condition of interim cover	x		
2b. Condition of final cover	N/A		
2c. Condition of vegetation	x		
2d. Condition of erosion control devices	x		
3. Leachate Collection and Storage System			
3a. Condition of leachate pumps	x		
3b. Condition of leachate control panels	x		
3c. Status of leachate levels in disposal cells	x		
3d. Condition of leachate collection piping	x		
3e. Condition of cleanouts and headwalls	x		
3f. Condition of leachate transmission piping	x		
3g. Condition of leachate storage system	x		
3h. Leachate Totalizer Flow Reading in gallons	x		29563798.9
4. Stormwater Control Facilities			
4a. Condition of culverts	x		
4b. Condition of ditches	x		
4c. Condition of Diversion Berms	x		
4d. Condition of letdowns	N/A		
4e. Condition of stormwater ponds	x		
5. Groundwater Monitoring Wells			
5a. Condition of well casing and locks	x		
5b. Condition of well pads and pipe bollards	x		
5c. Access to wells	x		
6. Landfill Access Road			
6a. Condition of main access road	x		
6b. Condition of active disposal area access road	x		
6c. Acceptable dust control measures	x		
7. Other items			
7a.			
7b.			
<b>Bryan Mangrum</b>	<b>Bryan Mangrum</b>		<b>9-16-2025</b>
<b>Print Name of Inspector Completing Form</b>	<b>Signature</b>		<b>Date</b>

**PLUM POINT SERVICES COMPANY CLASS 3N LANDFILL  
WEEKLY LANDFILL INSPECTION FORM**

Facility Name: Plum Point Energy Station, Class 3N Landfill			
Facility Address: 2732 South County Road 623, Osceola, AR 72370			
Date: 9-23-2025	Time: 8:00 AM	Weather: overcast storm threats	
Inspection Representatives			
Charah: Bryan Mangrum			
Others:			
Weekly Inspection Observations			
	Acceptable	Needs Improvement	Comments (See page 2 for Additional Comments)
1. General Operating Issues			
1a. General Stability of landfill slopes	x		
1b. Condition of exposed waste slopes	x		
1c. Condition of exposed waste grading	x		
1d. Signs of erosion or washouts	x		
1e. Signs of leachate seeps	x		
1g. Condition of landfill signage	x		
2. Cover System			
2a. Condition of interim cover	x		
2b. Condition of final cover	N/A		
2c. Condition of vegetation	x		
2d. Condition of erosion control devices	x		
3. Leachate Collection and Storage System			
3a. Condition of leachate pumps	x		
3b. Condition of leachate control panels	x		
3c. Status of leachate levels in disposal cells	x		
3d. Condition of leachate collection piping	x		
3e. Condition of cleanouts and headwalls	x		
3f. Condition of leachate transmission piping	x		
3g. Condition of leachate storage system	x		
3h. Leachate Totalizer Flow Reading in gallons	x		29563798.9
4. Stormwater Control Facilities			
4a. Condition of culverts	x		
4b. Condition of ditches	x		
4c. Condition of Diversion Berms	x		
4d. Condition of letdowns	N/A		
4e. Condition of stormwater ponds	x		
5. Groundwater Monitoring Wells			
5a. Condition of well casing and locks	x		
5b. Condition of well pads and pipe bollards	x		
5c. Access to wells	x		
6. Landfill Access Road			
6a. Condition of main access road	x		
6b. Condition of active disposal area access road	x		
6c. Acceptable dust control measures	x		
7. Other items			
7a.			
7b.			
<b>Bryan Mangrum</b>	<b>Bryan Mangrum</b>		<b>9-23-2025</b>
<b>Print Name of Inspector Completing Form</b>	<b>Signature</b>		<b>Date</b>

**PLUM POINT SERVICES COMPANY CLASS 3N LANDFILL  
WEEKLY LANDFILL INSPECTION FORM**

Facility Name: Plum Point Energy Station, Class 3N Landfill			
Facility Address: 2732 South County Road 623, Osceola, AR 72370			
Date: 9-30-2025	Time: 10:00 AM	Weather: clear	
Inspection Representatives			
Charah: Bryan Mangrum			
Others:			
Weekly Inspection Observations			
	Acceptable	Needs Improvement	Comments (See page 2 for Additional Comments)
1. General Operating Issues			
1a. General Stability of landfill slopes	x		
1b. Condition of exposed waste slopes	x		
1c. Condition of exposed waste grading	x		
1d. Signs of erosion or washouts	x		
1e. Signs of leachate seeps	x		
1g. Condition of landfill signage	x		
2. Cover System			
2a. Condition of interim cover	x		
2b. Condition of final cover	N/A		
2c. Condition of vegetation	x		
2d. Condition of erosion control devices	x		
3. Leachate Collection and Storage System			
3a. Condition of leachate pumps	x		
3b. Condition of leachate control panels	x		
3c. Status of leachate levels in disposal cells	x		
3d. Condition of leachate collection piping	x		
3e. Condition of cleanouts and headwalls	x		
3f. Condition of leachate transmission piping	x		
3g. Condition of leachate storage system	x		
3h. Leachate Totalizer Flow Reading in gallons	x		30576545.2
4. Stormwater Control Facilities			
4a. Condition of culverts	x		
4b. Condition of ditches	x		
4c. Condition of Diversion Berms	x		
4d. Condition of letdowns	N/A		
4e. Condition of stormwater ponds	x		
5. Groundwater Monitoring Wells			
5a. Condition of well casing and locks	x		
5b. Condition of well pads and pipe bollards	x		
5c. Access to wells	x		
6. Landfill Access Road			
6a. Condition of main access road	x		
6b. Condition of active disposal area access road	x		
6c. Acceptable dust control measures	x		
7. Other items			
7a.			
7b.			
<b>Bryan Mangrum</b>	<b>Bryan Mangrum</b>		<b>9-20-2025</b>
<b>Print Name of Inspector Completing Form</b>	<b>Signature</b>		<b>Date</b>

# PLUM POINT ENERGY STATION CLASS 3N LANDFILL

## Operations Inspection Form

Inspection Completed By: Bryan Mangrum Date: 9/22/2025

DESCRIPTION	INSPECTION INTERVAL	PASS	FAIL*
<b>Surface Water System</b>			
Drainage Ditches & Culverts	Monthly	<input checked="" type="checkbox"/>	<input type="checkbox"/>
Berms	Monthly	<input checked="" type="checkbox"/>	<input type="checkbox"/>
<b>Leachate Collection System</b>			
Pumps	Monthly	<input checked="" type="checkbox"/>	<input type="checkbox"/>
Totalizers	Monthly	<input checked="" type="checkbox"/>	<input type="checkbox"/>
Transmission/Recirculation Systems	Monthly	<input checked="" type="checkbox"/>	<input type="checkbox"/>
Storage Pond	Monthly	<input checked="" type="checkbox"/>	<input type="checkbox"/>
<b>Landfill Final Cover System</b>			
Erosion	Monthly	<input checked="" type="checkbox"/>	<input type="checkbox"/>
Ponded Water	Monthly	<input checked="" type="checkbox"/>	<input type="checkbox"/>
Settlement	Monthly	<input checked="" type="checkbox"/>	<input type="checkbox"/>
Vegetation	Monthly	<input checked="" type="checkbox"/>	<input type="checkbox"/>
<b>Facility Roads</b>			
Safety	Monthly	<input checked="" type="checkbox"/>	<input type="checkbox"/>
Routing	Monthly	<input checked="" type="checkbox"/>	<input type="checkbox"/>
Condition	Monthly	<input checked="" type="checkbox"/>	<input type="checkbox"/>
Mud	Monthly	<input checked="" type="checkbox"/>	<input type="checkbox"/>
Passable Width	Monthly	<input checked="" type="checkbox"/>	<input type="checkbox"/>
<b>Emergency Response Equipment</b>			
Fire Extinguisher	Check Quarterly	<input checked="" type="checkbox"/>	<input type="checkbox"/>
	Test Annually	<input checked="" type="checkbox"/>	<input type="checkbox"/>
Communication System	Monthly	<input checked="" type="checkbox"/>	<input type="checkbox"/>
List of Emergency Phone Numbers	Monthly	<input checked="" type="checkbox"/>	<input type="checkbox"/>
First Aid Kits	Monthly	<input checked="" type="checkbox"/>	<input type="checkbox"/>
<b>Waste Cell and Plant Grid Markers</b>	Monthly	<input checked="" type="checkbox"/>	<input type="checkbox"/>
<b>Survey Markers</b>	Annually	<input checked="" type="checkbox"/>	<input type="checkbox"/>
<b>Groundwater Monitoring Wells</b>	Semi-Annually	<input checked="" type="checkbox"/>	<input type="checkbox"/>

\*Explain failure on back of form

**PLUM POINT SERVICES COMPANY CLASS 3N LANDFILL  
WEEKLY LANDFILL INSPECTION FORM**

Facility Name: Plum Point Energy Station, Class 3N Landfill			
Facility Address: 2732 South County Road 623, Osceola, AR 72370			
Date: 10-7-2025	Time: 10:00 AM	Weather: overcast	
Inspection Representatives			
Charah: Eddie Wamble			
Others:			
Weekly Inspection Observations			
	Acceptable	Needs Improvement	Comments (See page 2 for Additional Comments)
1. General Operating Issues			
1a. General Stability of landfill slopes	x		
1b. Condition of exposed waste slopes	x		
1c. Condition of exposed waste grading	x		
1d. Signs of erosion or washouts	x		
1e. Signs of leachate seeps	x		
1g. Condition of landfill signage	x		
2. Cover System			
2a. Condition of interim cover	x		
2b. Condition of final cover	N/A		
2c. Condition of vegetation	x		
2d. Condition of erosion control devices	x		
3. Leachate Collection and Storage System			
3a. Condition of leachate pumps	x		
3b. Condition of leachate control panels	x		
3c. Status of leachate levels in disposal cells	x		
3d. Condition of leachate collection piping	x		
3e. Condition of cleanouts and headwalls	x		
3f. Condition of leachate transmission piping	x		
3g. Condition of leachate storage system	x		
3h. Leachate Totalizer Flow Reading in gallons	x		31741759.1
4. Stormwater Control Facilities			
4a. Condition of culverts	x		
4b. Condition of ditches	x		
4c. Condition of Diversion Berms	x		
4d. Condition of letdowns	N/A		
4e. Condition of stormwater ponds	x		
5. Groundwater Monitoring Wells			
5a. Condition of well casing and locks	x		
5b. Condition of well pads and pipe bollards	x		
5c. Access to wells	x		
6. Landfill Access Road			
6a. Condition of main access road	x		
6b. Condition of active disposal area access road	x		
6c. Acceptable dust control measures	x		
7. Other items			
7a.			
7b.			
Eddie Wamble	Eddie Wamble		10-7--2025
Print Name of Inspector Completing Form	Signature		Date

**PLUM POINT SERVICES COMPANY CLASS 3N LANDFILL  
WEEKLY LANDFILL INSPECTION FORM**

Facility Name: Plum Point Energy Station, Class 3N Landfill			
Facility Address: 2732 South County Road 623, Osceola, AR 72370			
Date: 10-14-2025	Time: 10:00 AM	Weather: sunny/ clear	
Inspection Representatives			
Charah: Bryan Mangrum			
Others:			
Weekly Inspection Observations			
	Acceptable	Needs Improvement	Comments (See page 2 for Additional Comments)
1. General Operating Issues			
1a. General Stability of landfill slopes	x		
1b. Condition of exposed waste slopes	x		
1c. Condition of exposed waste grading	x		
1d. Signs of erosion or washouts	x		
1e. Signs of leachate seeps	x		
1g. Condition of landfill signage	x		
2. Cover System			
2a. Condition of interim cover	x		
2b. Condition of final cover	N/A		
2c. Condition of vegetation	x		
2d. Condition of erosion control devices	x		
3. Leachate Collection and Storage System			
3a. Condition of leachate pumps	x		
3b. Condition of leachate control panels	x		
3c. Status of leachate levels in disposal cells	x		
3d. Condition of leachate collection piping	x		
3e. Condition of cleanouts and headwalls	x		
3f. Condition of leachate transmission piping	x		
3g. Condition of leachate storage system	x		
3h. Leachate Totalizer Flow Reading in gallons	x		32591800.4
4. Stormwater Control Facilities			
4a. Condition of culverts	x		
4b. Condition of ditches	x		
4c. Condition of Diversion Berms	x		
4d. Condition of letdowns	N/A		
4e. Condition of stormwater ponds	x		
5. Groundwater Monitoring Wells			
5a. Condition of well casing and locks	x		
5b. Condition of well pads and pipe bollards	x		
5c. Access to wells	x		
6. Landfill Access Road			
6a. Condition of main access road	x		
6b. Condition of active disposal area access road	x		
6c. Acceptable dust control measures	x		
7. Other items			
7a.			
7b.			
<b>Bryan Mangrum</b> Print Name of Inspector Completing Form	<b>Bryan Mangrum</b> Signature		10-14-2025 Date

**PLUM POINT SERVICES COMPANY CLASS 3N LANDFILL  
WEEKLY LANDFILL INSPECTION FORM**

Facility Name: Plum Point Energy Station, Class 3N Landfill			
Facility Address: 2732 South County Road 623, Osceola, AR 72370			
Date: 10-21-2025	Time: 8:30 AM	Weather: clear	
Inspection Representatives			
Charah: Bryan Mangrum			
Others:			
Weekly Inspection Observations			
	Acceptable	Needs Improvement	Comments (See page 2 for Additional Comments)
1. General Operating Issues			
1a. General Stability of landfill slopes	x		
1b. Condition of exposed waste slopes	x		
1c. Condition of exposed waste grading	x		
1d. Signs of erosion or washouts	x		
1e. Signs of leachate seeps	x		
1g. Condition of landfill signage	x		
2. Cover System			
2a. Condition of interim cover	x		
2b. Condition of final cover	N/A		
2c. Condition of vegetation	x		
2d. Condition of erosion control devices	x		
3. Leachate Collection and Storage System			
3a. Condition of leachate pumps	x		
3b. Condition of leachate control panels	x		
3c. Status of leachate levels in disposal cells	x		
3d. Condition of leachate collection piping	x		
3e. Condition of cleanouts and headwalls	x		
3f. Condition of leachate transmission piping	x		
3g. Condition of leachate storage system	x		
3h. Leachate Totalizer Flow Reading in gallons	x		33096734.7
4. Stormwater Control Facilities			
4a. Condition of culverts	x		
4b. Condition of ditches	x		
4c. Condition of Diversion Berms	x		
4d. Condition of letdowns	N/A		
4e. Condition of stormwater ponds	x		
5. Groundwater Monitoring Wells			
5a. Condition of well casing and locks	x		
5b. Condition of well pads and pipe bollards	x		
5c. Access to wells	x		
6. Landfill Access Road			
6a. Condition of main access road	x		
6b. Condition of active disposal area access road	x		
6c. Acceptable dust control measures	x		
7. Other items			
7a.			
7b.			
<b>Bryan Mangrum</b> Print Name of Inspector Completing Form	<b>Bryan Mangrum</b> Signature	<b>10-21-2025</b> Date	

**PLUM POINT SERVICES COMPANY CLASS 3N LANDFILL  
WEEKLY LANDFILL INSPECTION FORM**

Facility Name: Plum Point Energy Station, Class 3N Landfill			
Facility Address: 2732 South County Road 623, Osceola, AR 72370			
Date: 10-28-2025	Time: 10:30 AM	Weather: cloudy	
Inspection Representatives			
Charah: Bryan Mangrum			
Others:			
Weekly Inspection Observations			
	Acceptable	Needs Improvement	Comments (See page 2 for Additional Comments)
1. General Operating Issues			
1a. General Stability of landfill slopes	x		
1b. Condition of exposed waste slopes	x		
1c. Condition of exposed waste grading	x		
1d. Signs of erosion or washouts	x		
1e. Signs of leachate seeps	x		
1g. Condition of landfill signage	x		
2. Cover System			
2a. Condition of interim cover	x		
2b. Condition of final cover	N/A		
2c. Condition of vegetation	x		
2d. Condition of erosion control devices	x		
3. Leachate Collection and Storage System			
3a. Condition of leachate pumps	x		
3b. Condition of leachate control panels	x		
3c. Status of leachate levels in disposal cells	x		
3d. Condition of leachate collection piping	x		
3e. Condition of cleanouts and headwalls	x		
3f. Condition of leachate transmission piping	x		
3g. Condition of leachate storage system	x		
3h. Leachate Totalizer Flow Reading in gallons	x		33608393.1
4. Stormwater Control Facilities			
4a. Condition of culverts	x		
4b. Condition of ditches	x		
4c. Condition of Diversion Berms	x		
4d. Condition of letdowns	N/A		
4e. Condition of stormwater ponds	x		
5. Groundwater Monitoring Wells			
5a. Condition of well casing and locks	x		
5b. Condition of well pads and pipe bollards	x		
5c. Access to wells	x		
6. Landfill Access Road			
6a. Condition of main access road	x		
6b. Condition of active disposal area access road	x		
6c. Acceptable dust control measures	x		
7. Other items			
7a.			
7b.			
<b>Bryan Mangrum</b>	<b>Bryan Mangrum</b>		<b>10-28-2025</b>
<b>Print Name of Inspector Completing Form</b>	<b>Signature</b>		<b>Date</b>

# PLUM POINT ENERGY STATION CLASS 3N LANDFILL

## Operations Inspection Form

Inspection Completed By: Bryan Mangrum Date: 10/14/2025

DESCRIPTION	INSPECTION INTERVAL	PASS	FAIL*
<b>Surface Water System</b>			
Drainage Ditches & Culverts	Monthly	<input checked="" type="checkbox"/>	<input type="checkbox"/>
Berms	Monthly	<input checked="" type="checkbox"/>	<input type="checkbox"/>
<b>Leachate Collection System</b>			
Pumps	Monthly	<input checked="" type="checkbox"/>	<input type="checkbox"/>
Totalizers	Monthly	<input checked="" type="checkbox"/>	<input type="checkbox"/>
Transmission/Recirculation Systems	Monthly	<input checked="" type="checkbox"/>	<input type="checkbox"/>
Storage Pond	Monthly	<input checked="" type="checkbox"/>	<input type="checkbox"/>
<b>Landfill Final Cover System</b>			
Erosion	Monthly	<input checked="" type="checkbox"/>	<input type="checkbox"/>
Ponded Water	Monthly	<input checked="" type="checkbox"/>	<input type="checkbox"/>
Settlement	Monthly	<input checked="" type="checkbox"/>	<input type="checkbox"/>
Vegetation	Monthly	<input checked="" type="checkbox"/>	<input type="checkbox"/>
<b>Facility Roads</b>			
Safety	Monthly	<input checked="" type="checkbox"/>	<input type="checkbox"/>
Routing	Monthly	<input checked="" type="checkbox"/>	<input type="checkbox"/>
Condition	Monthly	<input checked="" type="checkbox"/>	<input type="checkbox"/>
Mud	Monthly	<input checked="" type="checkbox"/>	<input type="checkbox"/>
Passable Width	Monthly	<input checked="" type="checkbox"/>	<input type="checkbox"/>
<b>Emergency Response Equipment</b>			
Fire Extinguisher	Check Quarterly	<input checked="" type="checkbox"/>	<input type="checkbox"/>
	Test Annually	<input checked="" type="checkbox"/>	<input type="checkbox"/>
Communication System	Monthly	<input checked="" type="checkbox"/>	<input type="checkbox"/>
List of Emergency Phone Numbers	Monthly	<input checked="" type="checkbox"/>	<input type="checkbox"/>
First Aid Kits	Monthly	<input checked="" type="checkbox"/>	<input type="checkbox"/>
<b>Waste Cell and Plant Grid Markers</b>	Monthly	<input checked="" type="checkbox"/>	<input type="checkbox"/>
<b>Survey Markers</b>	Annually	<input checked="" type="checkbox"/>	<input type="checkbox"/>
<b>Groundwater Monitoring Wells</b>	Semi-Annually	<input checked="" type="checkbox"/>	<input type="checkbox"/>

\*Explain failure on back of form

**PLUM POINT SERVICES COMPANY CLASS 3N LANDFILL  
WEEKLY LANDFILL INSPECTION FORM**

Facility Name: Plum Point Energy Station, Class 3N Landfill			
Facility Address: 2732 South County Road 623, Osceola, AR 72370			
Date: 11-4-2025	Time: 1:00 PM	Weather: clear	
Inspection Representatives			
Charah: Bryan Mangrum			
Others:			
Weekly Inspection Observations			
	Acceptable	Needs Improvement	Comments (See page 2 for Additional Comments)
1. General Operating Issues			
1a. General Stability of landfill slopes	x		
1b. Condition of exposed waste slopes	x		
1c. Condition of exposed waste grading	x		
1d. Signs of erosion or washouts	x		
1e. Signs of leachate seeps	x		
1g. Condition of landfill signage	x		
2. Cover System			
2a. Condition of interim cover	x		
2b. Condition of final cover	N/A		
2c. Condition of vegetation	x		
2d. Condition of erosion control devices	x		
3. Leachate Collection and Storage System			
3a. Condition of leachate pumps	x		
3b. Condition of leachate control panels	x		
3c. Status of leachate levels in disposal cells	x		
3d. Condition of leachate collection piping	x		
3e. Condition of cleanouts and headwalls	x		
3f. Condition of leachate transmission piping	x		
3g. Condition of leachate storage system	x		
3h. Leachate Totalizer Flow Reading in gallons	x		33997058.9
4. Stormwater Control Facilities			
4a. Condition of culverts	x		
4b. Condition of ditches	x		
4c. Condition of Diversion Berms	x		
4d. Condition of letdowns	N/A		
4e. Condition of stormwater ponds	x		
5. Groundwater Monitoring Wells			
5a. Condition of well casing and locks	x		
5b. Condition of well pads and pipe bollards	x		
5c. Access to wells	x		
6. Landfill Access Road			
6a. Condition of main access road	x		
6b. Condition of active disposal area access road	x		
6c. Acceptable dust control measures	x		
7. Other items			
7a.			
7b.			
<b>Bryan Mangrum</b>	<b>Bryan Mangrum</b>		<b>11-4-2025</b>
<b>Print Name of Inspector Completing Form</b>	<b>Signature</b>		<b>Date</b>

**PLUM POINT SERVICES COMPANY CLASS 3N LANDFILL  
WEEKLY LANDFILL INSPECTION FORM**

Facility Name: Plum Point Energy Station, Class 3N Landfill			
Facility Address: 2732 South County Road 623, Osceola, AR 72370			
Date: 11-11-2025	Time: 9:00 AM	Weather: clear	
Inspection Representatives			
Charah: Eddie Wamble			
Others:			
Weekly Inspection Observations			
	Acceptable	Needs Improvement	Comments (See page 2 for Additional Comments)
1. General Operating Issues			
1a. General Stability of landfill slopes	x		
1b. Condition of exposed waste slopes	x		
1c. Condition of exposed waste grading	x		
1d. Signs of erosion or washouts	x		
1e. Signs of leachate seeps	x		
1g. Condition of landfill signage	x		
2. Cover System			
2a. Condition of interim cover	x		
2b. Condition of final cover	N/A		
2c. Condition of vegetation	x		
2d. Condition of erosion control devices	x		
3. Leachate Collection and Storage System			
3a. Condition of leachate pumps	x		
3b. Condition of leachate control panels	x		
3c. Status of leachate levels in disposal cells	x		
3d. Condition of leachate collection piping	x		
3e. Condition of cleanouts and headwalls	x		
3f. Condition of leachate transmission piping	x		
3g. Condition of leachate storage system	x		
3h. Leachate Totalizer Flow Reading in gallons	x		33997058.9
4. Stormwater Control Facilities			
4a. Condition of culverts	x		
4b. Condition of ditches	x		
4c. Condition of Diversion Berms	x		
4d. Condition of letdowns	N/A		
4e. Condition of stormwater ponds	x		
5. Groundwater Monitoring Wells			
5a. Condition of well casing and locks	x		
5b. Condition of well pads and pipe bollards	x		
5c. Access to wells	x		
6. Landfill Access Road			
6a. Condition of main access road	x		
6b. Condition of active disposal area access road	x		
6c. Acceptable dust control measures	x		
7. Other items			
7a.			
7b.			
Eddie Wamble	Eddie Wamble		11-11-2025
Print Name of Inspector Completing Form	Signature		Date

**PLUM POINT SERVICES COMPANY CLASS 3N LANDFILL  
WEEKLY LANDFILL INSPECTION FORM**

Facility Name: Plum Point Energy Station, Class 3N Landfill			
Facility Address: 2732 South County Road 623, Osceola, AR 72370			
Date: 11-18-2025	Time: 2:00 PM	Weather: overcast	
Inspection Representatives			
Charah: Eddie Wamble			
Others:			
Weekly Inspection Observations			
	Acceptable	Needs Improvement	Comments (See page 2 for Additional Comments)
1. General Operating Issues			
1a. General Stability of landfill slopes	x		
1b. Condition of exposed waste slopes	x		
1c. Condition of exposed waste grading	x		
1d. Signs of erosion or washouts	x		
1e. Signs of leachate seeps	x		
1g. Condition of landfill signage	x		
2. Cover System			
2a. Condition of interim cover	x		
2b. Condition of final cover	N/A		
2c. Condition of vegetation	x		
2d. Condition of erosion control devices	x		
3. Leachate Collection and Storage System			
3a. Condition of leachate pumps	x		
3b. Condition of leachate control panels	x		
3c. Status of leachate levels in disposal cells	x		
3d. Condition of leachate collection piping	x		
3e. Condition of cleanouts and headwalls	x		
3f. Condition of leachate transmission piping	x		
3g. Condition of leachate storage system	x		
3h. Leachate Totalizer Flow Reading in gallons	x		33997058.9
4. Stormwater Control Facilities			
4a. Condition of culverts	x		
4b. Condition of ditches	x		
4c. Condition of Diversion Berms	x		
4d. Condition of letdowns	N/A		
4e. Condition of stormwater ponds	x		
5. Groundwater Monitoring Wells			
5a. Condition of well casing and locks	x		
5b. Condition of well pads and pipe bollards	x		
5c. Access to wells	x		
6. Landfill Access Road			
6a. Condition of main access road	x		
6b. Condition of active disposal area access road	x		
6c. Acceptable dust control measures	x		
7. Other items			
7a.			
7b.			
<b>Bryan Mangrum</b>	<b>Bryan Mangrum</b>		<b>11-18-2025</b>
<b>Print Name of Inspector Completing Form</b>	<b>Signature</b>		<b>Date</b>

**PLUM POINT SERVICES COMPANY CLASS 3N LANDFILL  
WEEKLY LANDFILL INSPECTION FORM**

Facility Name: Plum Point Energy Station, Class 3N Landfill			
Facility Address: 2732 South County Road 623, Osceola, AR 72370			
Date: 11-25-2025	Time: 1:00 PM	Weather: overcast / rain	
Inspection Representatives			
Charah: Bryan Mangrum			
Others:			
Weekly Inspection Observations			
	Acceptable	Needs Improvement	Comments (See page 2 for Additional Comments)
1. General Operating Issues			
1a. General Stability of landfill slopes	x		
1b. Condition of exposed waste slopes	x		
1c. Condition of exposed waste grading	x		
1d. Signs of erosion or washouts	x		
1e. Signs of leachate seeps	x		
1g. Condition of landfill signage	x		
2. Cover System			
2a. Condition of interim cover	x		
2b. Condition of final cover	N/A		
2c. Condition of vegetation	x		
2d. Condition of erosion control devices	x		
3. Leachate Collection and Storage System			
3a. Condition of leachate pumps	x		
3b. Condition of leachate control panels	x		
3c. Status of leachate levels in disposal cells	x		
3d. Condition of leachate collection piping	x		
3e. Condition of cleanouts and headwalls	x		
3f. Condition of leachate transmission piping	x		
3g. Condition of leachate storage system	x		
3h. Leachate Totalizer Flow Reading in gallons	x		33997058.9
4. Stormwater Control Facilities			
4a. Condition of culverts	x		
4b. Condition of ditches	x		
4c. Condition of Diversion Berms	x		
4d. Condition of letdowns	N/A		
4e. Condition of stormwater ponds	x		
5. Groundwater Monitoring Wells			
5a. Condition of well casing and locks	x		
5b. Condition of well pads and pipe bollards	x		
5c. Access to wells	x		
6. Landfill Access Road			
6a. Condition of main access road	x		
6b. Condition of active disposal area access road	x		
6c. Acceptable dust control measures	x		
7. Other items			
7a.			
7b.			
<b>Bryan Mangrum</b> Print Name of Inspector Completing Form	<b>Bryan Mangrum</b> Signature		11-25-2025 Date

# PLUM POINT ENERGY STATION CLASS 3N LANDFILL

## Operations Inspection Form

Inspection Completed By: Bryan Mangrum Date: 11/25/2025

DESCRIPTION	INSPECTION INTERVAL	PASS	FAIL*
<b>Surface Water System</b>			
Drainage Ditches & Culverts	Monthly	<input checked="" type="checkbox"/>	<input type="checkbox"/>
Berms	Monthly	<input checked="" type="checkbox"/>	<input type="checkbox"/>
<b>Leachate Collection System</b>			
Pumps	Monthly	<input checked="" type="checkbox"/>	<input type="checkbox"/>
Totalizers	Monthly	<input checked="" type="checkbox"/>	<input type="checkbox"/>
Transmission/Recirculation Systems	Monthly	<input checked="" type="checkbox"/>	<input type="checkbox"/>
Storage Pond	Monthly	<input checked="" type="checkbox"/>	<input type="checkbox"/>
<b>Landfill Final Cover System</b>			
Erosion	Monthly	<input checked="" type="checkbox"/>	<input type="checkbox"/>
Ponded Water	Monthly	<input checked="" type="checkbox"/>	<input type="checkbox"/>
Settlement	Monthly	<input checked="" type="checkbox"/>	<input type="checkbox"/>
Vegetation	Monthly	<input checked="" type="checkbox"/>	<input type="checkbox"/>
<b>Facility Roads</b>			
Safety	Monthly	<input checked="" type="checkbox"/>	<input type="checkbox"/>
Routing	Monthly	<input checked="" type="checkbox"/>	<input type="checkbox"/>
Condition	Monthly	<input checked="" type="checkbox"/>	<input type="checkbox"/>
Mud	Monthly	<input checked="" type="checkbox"/>	<input type="checkbox"/>
Passable Width	Monthly	<input checked="" type="checkbox"/>	<input type="checkbox"/>
<b>Emergency Response Equipment</b>			
Fire Extinguisher	Check Quarterly	<input checked="" type="checkbox"/>	<input type="checkbox"/>
	Test Annually	<input checked="" type="checkbox"/>	<input type="checkbox"/>
Communication System	Monthly	<input checked="" type="checkbox"/>	<input type="checkbox"/>
List of Emergency Phone Numbers	Monthly	<input checked="" type="checkbox"/>	<input type="checkbox"/>
First Aid Kits	Monthly	<input checked="" type="checkbox"/>	<input type="checkbox"/>
<b>Waste Cell and Plant Grid Markers</b>	Monthly	<input checked="" type="checkbox"/>	<input type="checkbox"/>
<b>Survey Markers</b>	Annually	<input checked="" type="checkbox"/>	<input type="checkbox"/>
<b>Groundwater Monitoring Wells</b>	Semi-Annually	<input checked="" type="checkbox"/>	<input type="checkbox"/>

\*Explain failure on back of form

**PLUM POINT SERVICES COMPANY CLASS 3N LANDFILL  
WEEKLY LANDFILL INSPECTION FORM**

Facility Name: Plum Point Energy Station, Class 3N Landfill			
Facility Address: 2732 South County Road 623, Osceola, AR 72370			
Date: 12-9-2025	Time: 9:00 AM	Weather: overcast	
Inspection Representatives			
Charah: Bryan Mangrum			
Others:			
Weekly Inspection Observations			
	Acceptable	Needs Improvement	Comments (See page 2 for Additional Comments)
1. General Operating Issues			
1a. General Stability of landfill slopes	x		
1b. Condition of exposed waste slopes	x		
1c. Condition of exposed waste grading	x		
1d. Signs of erosion or washouts	x		
1e. Signs of leachate seeps	x		
1g. Condition of landfill signage	x		
2. Cover System			
2a. Condition of interim cover	x		
2b. Condition of final cover	N/A		
2c. Condition of vegetation	x		
2d. Condition of erosion control devices	x		
3. Leachate Collection and Storage System			
3a. Condition of leachate pumps	x		
3b. Condition of leachate control panels	x		
3c. Status of leachate levels in disposal cells	x		
3d. Condition of leachate collection piping	x		
3e. Condition of cleanouts and headwalls	x		
3f. Condition of leachate transmission piping	x		
3g. Condition of leachate storage system	x		
3h. Leachate Totalizer Flow Reading in gallons	x		33997058.9
4. Stormwater Control Facilities			
4a. Condition of culverts	x		
4b. Condition of ditches	x		
4c. Condition of Diversion Berms	x		
4d. Condition of letdowns	N/A		
4e. Condition of stormwater ponds	x		
5. Groundwater Monitoring Wells			
5a. Condition of well casing and locks	x		
5b. Condition of well pads and pipe bollards	x		
5c. Access to wells	x		
6. Landfill Access Road			
6a. Condition of main access road	x		Repairing pot holes on entrance road
6b. Condition of active disposal area access road	x		
6c. Acceptable dust control measures	x		
7. Other items			
7a.			
7b.			
<b>Bryan Mangrum</b>	<b>Bryan Mangrum</b>		<b>12-9-2025</b>
<b>Print Name of Inspector Completing Form</b>	<b>Signature</b>		<b>Date</b>

**PLUM POINT SERVICES COMPANY CLASS 3N LANDFILL  
WEEKLY LANDFILL INSPECTION FORM**

Facility Name: Plum Point Energy Station, Class 3N Landfill			
Facility Address: 2732 South County Road 623, Osceola, AR 72370			
Date: 12-9-2025	Time: 9:00 AM	Weather: overcast	
Inspection Representatives			
Charah: Bryan Mangrum			
Others:			
Weekly Inspection Observations			
	Acceptable	Needs Improvement	Comments (See page 2 for Additional Comments)
1. General Operating Issues			
1a. General Stability of landfill slopes	x		
1b. Condition of exposed waste slopes	x		
1c. Condition of exposed waste grading	x		
1d. Signs of erosion or washouts	x		
1e. Signs of leachate seeps	x		
1g. Condition of landfill signage	x		
2. Cover System			
2a. Condition of interim cover	x		
2b. Condition of final cover	N/A		
2c. Condition of vegetation	x		
2d. Condition of erosion control devices	x		
3. Leachate Collection and Storage System			
3a. Condition of leachate pumps	x		
3b. Condition of leachate control panels	x		
3c. Status of leachate levels in disposal cells	x		
3d. Condition of leachate collection piping	x		
3e. Condition of cleanouts and headwalls	x		
3f. Condition of leachate transmission piping	x		
3g. Condition of leachate storage system	x		
3h. Leachate Totalizer Flow Reading in gallons	x		33997058.9
4. Stormwater Control Facilities			
4a. Condition of culverts	x		
4b. Condition of ditches	x		
4c. Condition of Diversion Berms	x		
4d. Condition of letdowns	N/A		
4e. Condition of stormwater ponds	x		
5. Groundwater Monitoring Wells			
5a. Condition of well casing and locks	x		
5b. Condition of well pads and pipe bollards	x		
5c. Access to wells	x		
6. Landfill Access Road			
6a. Condition of main access road	x		Repairing pot holes on entrance road
6b. Condition of active disposal area access road	x		
6c. Acceptable dust control measures	x		
7. Other items			
7a.			
7b.			
<b>Bryan Mangrum</b>	<b>Bryan Mangrum</b>		<b>12-9-2025</b>
<b>Print Name of Inspector Completing Form</b>	<b>Signature</b>		<b>Date</b>

**PLUM POINT SERVICES COMPANY CLASS 3N LANDFILL  
WEEKLY LANDFILL INSPECTION FORM**

Facility Name: Plum Point Energy Station, Class 3N Landfill			
Facility Address: 2732 South County Road 623, Osceola, AR 72370			
Date: 12-16-2025	Time: 1:00 PM	Weather: overcast	
Inspection Representatives			
Charah: Bryan Mangrum			
Others:			
Weekly Inspection Observations			
	Acceptable	Needs Improvement	Comments (See page 2 for Additional Comments)
1. General Operating Issues			
1a. General Stability of landfill slopes	x		
1b. Condition of exposed waste slopes	x		
1c. Condition of exposed waste grading	x		
1d. Signs of erosion or washouts	x		
1e. Signs of leachate seeps	x		
1g. Condition of landfill signage	x		
2. Cover System			
2a. Condition of interim cover	x		
2b. Condition of final cover	N/A		
2c. Condition of vegetation	x		
2d. Condition of erosion control devices	x		
3. Leachate Collection and Storage System			
3a. Condition of leachate pumps	x		
3b. Condition of leachate control panels	x		
3c. Status of leachate levels in disposal cells	x		
3d. Condition of leachate collection piping	x		
3e. Condition of cleanouts and headwalls	x		
3f. Condition of leachate transmission piping	x		
3g. Condition of leachate storage system	x		
3h. Leachate Totalizer Flow Reading in gallons	x		33997058.9
4. Stormwater Control Facilities			
4a. Condition of culverts	x		
4b. Condition of ditches	x		
4c. Condition of Diversion Berms	x		
4d. Condition of letdowns	N/A		
4e. Condition of stormwater ponds	x		
5. Groundwater Monitoring Wells			
5a. Condition of well casing and locks	x		
5b. Condition of well pads and pipe bollards	x		
5c. Access to wells	x		
6. Landfill Access Road			
6a. Condition of main access road	x		
6b. Condition of active disposal area access road	x		
6c. Acceptable dust control measures	x		
7. Other items			
7a.			
7b.			
<b>Bryan Mangrum</b>	<b>Bryan Mangrum</b>		<b>12-16-2025</b>
<b>Print Name of Inspector Completing Form</b>	<b>Signature</b>		<b>Date</b>

**PLUM POINT SERVICES COMPANY CLASS 3N LANDFILL  
WEEKLY LANDFILL INSPECTION FORM**

Facility Name: Plum Point Energy Station, Class 3N Landfill			
Facility Address: 2732 South County Road 623, Osceola, AR 72370			
Date: 12-23-2025	Time: 1:30 pm	Weather: cloudy	
Inspection Representatives			
Charah: Eddie Wamble			
Others:			
Weekly Inspection Observations			
	Acceptable	Needs Improvement	Comments (See page 2 for Additional Comments)
1. General Operating Issues			
1a. General Stability of landfill slopes	x		
1b. Condition of exposed waste slopes	x		
1c. Condition of exposed waste grading	x		
1d. Signs of erosion or washouts	x		
1e. Signs of leachate seeps	x		
1g. Condition of landfill signage	x		
2. Cover System			
2a. Condition of interim cover	x		
2b. Condition of final cover	N/A		
2c. Condition of vegetation	x		
2d. Condition of erosion control devices	x		
3. Leachate Collection and Storage System			
3a. Condition of leachate pumps	x		
3b. Condition of leachate control panels	x		
3c. Status of leachate levels in disposal cells	x		
3d. Condition of leachate collection piping	x		
3e. Condition of cleanouts and headwalls	x		
3f. Condition of leachate transmission piping	x		
3g. Condition of leachate storage system	x		
3h. Leachate Totalizer Flow Reading in gallons	x		33997058.9
4. Stormwater Control Facilities			
4a. Condition of culverts	x		
4b. Condition of ditches	x		
4c. Condition of Diversion Berms	x		
4d. Condition of letdowns	N/A		
4e. Condition of stormwater ponds	x		
5. Groundwater Monitoring Wells			
5a. Condition of well casing and locks	x		
5b. Condition of well pads and pipe bollards	x		
5c. Access to wells	x		
6. Landfill Access Road			
6a. Condition of main access road	x		
6b. Condition of active disposal area access road	x		
6c. Acceptable dust control measures	x		
7. Other items			
7a.			
7b.			
Eddie Wamble Print Name of Inspector Completing Form	Eddie Wamble Signature	12-23-2025 Date	

**PLUM POINT SERVICES COMPANY CLASS 3N LANDFILL  
WEEKLY LANDFILL INSPECTION FORM**

Facility Name: Plum Point Energy Station, Class 3N Landfill			
Facility Address: 2732 South County Road 623, Osceola, AR 72370			
Date: 12-30-2025	Time: 9:00 AM	Weather: clear	
Inspection Representatives			
Charah: Bryan Mangrum			
Others:			
Weekly Inspection Observations			
	Acceptable	Needs Improvement	Comments (See page 2 for Additional Comments)
1. General Operating Issues			
1a. General Stability of landfill slopes	x		
1b. Condition of exposed waste slopes	x		
1c. Condition of exposed waste grading	x		
1d. Signs of erosion or washouts	x		
1e. Signs of leachate seeps	x		
1g. Condition of landfill signage	x		
2. Cover System			
2a. Condition of interim cover	x		
2b. Condition of final cover	N/A		
2c. Condition of vegetation	x		
2d. Condition of erosion control devices	x		
3. Leachate Collection and Storage System			
3a. Condition of leachate pumps	x		
3b. Condition of leachate control panels	x		
3c. Status of leachate levels in disposal cells	x		
3d. Condition of leachate collection piping	x		
3e. Condition of cleanouts and headwalls	x		
3f. Condition of leachate transmission piping	x		
3g. Condition of leachate storage system	x		
3h. Leachate Totalizer Flow Reading in gallons	x		33997058.9
4. Stormwater Control Facilities			
4a. Condition of culverts	x		
4b. Condition of ditches	x		
4c. Condition of Diversion Berms	x		
4d. Condition of letdowns	N/A		
4e. Condition of stormwater ponds	x		
5. Groundwater Monitoring Wells			
5a. Condition of well casing and locks	x		
5b. Condition of well pads and pipe bollards	x		
5c. Access to wells	x		
6. Landfill Access Road			
6a. Condition of main access road	x		
6b. Condition of active disposal area access road	x		
6c. Acceptable dust control measures	x		
7. Other items			
7a.			
7b.			
<b>Bryan Mangrum</b> Print Name of Inspector Completing Form	<b>Bryan Mangrum</b> Signature		12-30-2025 Date

# PLUM POINT ENERGY STATION CLASS 3N LANDFILL

## Operations Inspection Form

Inspection Completed By: Bryan Mangrum Date: 12/17/2025

DESCRIPTION	INSPECTION INTERVAL	PASS	FAIL*
<b>Surface Water System</b>			
Drainage Ditches & Culverts	Monthly	<input checked="" type="checkbox"/>	<input type="checkbox"/>
Berms	Monthly	<input checked="" type="checkbox"/>	<input type="checkbox"/>
<b>Leachate Collection System</b>			
Pumps	Monthly	<input checked="" type="checkbox"/>	<input type="checkbox"/>
Totalizers	Monthly	<input checked="" type="checkbox"/>	<input type="checkbox"/>
Transmission/Recirculation Systems	Monthly	<input checked="" type="checkbox"/>	<input type="checkbox"/>
Storage Pond	Monthly	<input checked="" type="checkbox"/>	<input type="checkbox"/>
<b>Landfill Final Cover System</b>			
Erosion	Monthly	<input checked="" type="checkbox"/>	<input type="checkbox"/>
Ponded Water	Monthly	<input checked="" type="checkbox"/>	<input type="checkbox"/>
Settlement	Monthly	<input checked="" type="checkbox"/>	<input type="checkbox"/>
Vegetation	Monthly	<input checked="" type="checkbox"/>	<input type="checkbox"/>
<b>Facility Roads</b>			
Safety	Monthly	<input checked="" type="checkbox"/>	<input type="checkbox"/>
Routing	Monthly	<input checked="" type="checkbox"/>	<input type="checkbox"/>
Condition	Monthly	<input checked="" type="checkbox"/>	<input type="checkbox"/>
Mud	Monthly	<input checked="" type="checkbox"/>	<input type="checkbox"/>
Passable Width	Monthly	<input checked="" type="checkbox"/>	<input type="checkbox"/>
<b>Emergency Response Equipment</b>			
Fire Extinguisher	Check Quarterly	<input checked="" type="checkbox"/>	<input type="checkbox"/>
	Test Annually	<input checked="" type="checkbox"/>	<input type="checkbox"/>
Communication System	Monthly	<input checked="" type="checkbox"/>	<input type="checkbox"/>
List of Emergency Phone Numbers	Monthly	<input checked="" type="checkbox"/>	<input type="checkbox"/>
First Aid Kits	Monthly	<input checked="" type="checkbox"/>	<input type="checkbox"/>
<b>Waste Cell and Plant Grid Markers</b>	Monthly	<input checked="" type="checkbox"/>	<input type="checkbox"/>
<b>Survey Markers</b>	Annually	<input checked="" type="checkbox"/>	<input type="checkbox"/>
<b>Groundwater Monitoring Wells</b>	Semi-Annually	<input checked="" type="checkbox"/>	<input type="checkbox"/>

\*Explain failure on back of form

**APPENDIX C**  
**PHOTOS OF ANNUAL ENGINEERING INSPECTION**



Photo 1. Water truck staged in shop parking lot.



Photo 2. Main haul road to landfill looking West with landfill in the



Photo 3. Active working face, bottom ash with chimney drain looking West (Cell 2).



Photo 4. Open disposal area, Cell 2.



Photo 5. Typical perimeter side slope intermediate cover and vegetation.

# **2025 ANNUAL ENGINEERING INSPECTION REPORT**

Osceola, Arkansas

DRAFT

January 2025

Olsson Project No. 025-06500